

# Atlantis

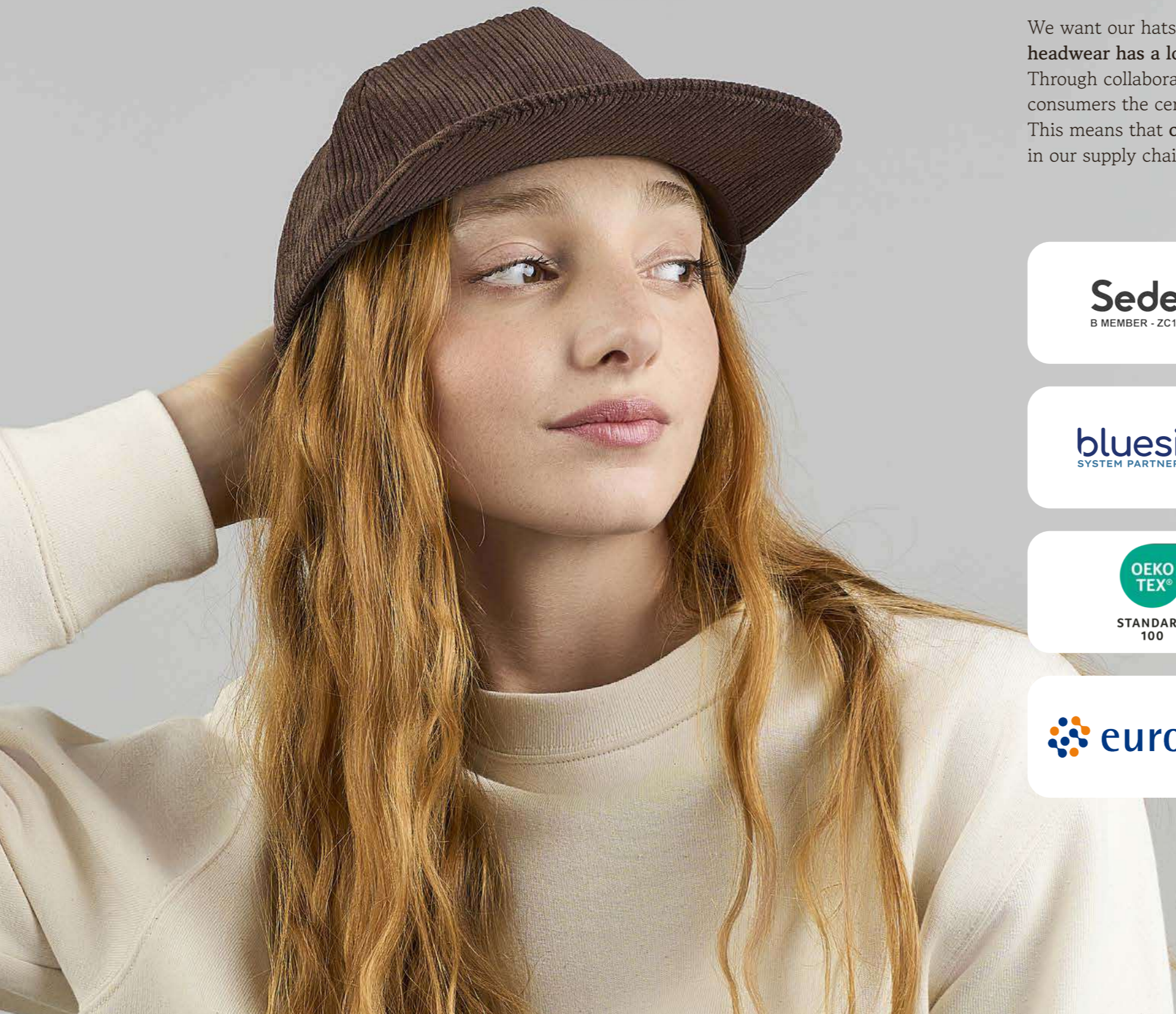




# A commitment to environmental responsibility and timeless design in the headwear industry.

The textile industry ranks among the world's most polluting sectors. A disruptive cycle of excessive production and consumption, driven by the mass manufacturing of low-quality goods, exacerbates this critical issue. **We stand firmly against this trend**, dedicating our efforts to sourcing high-quality materials, ensuring responsible production processes, and committing to ongoing research and development. **Our mission is to create products designed for longevity and sustainability.**

# Our responsibility



We are serious about our **sustainable mission** and want to prove that we are **transparent and trustworthy** through partners who promote the highest standards in the industry.

We want our hats to be on people's heads **for as long as possible** since **high-quality headwear has a longer life cycle**.

Through collaborations with **international standards and associations**, we want to give consumers the certainty that the products they buy **have been accredited by a third party**. This means that **our products are made responsibly** and that we work with all partners in our supply chain to adhere to **strict environmental and social standards**.


# Sustainability continues to be at the forefront of Atlantis Headwear's design philosophy.

Every collection has been a **step in our transformation** and sustainability continues to shape the way we imagine, develop and deliver our products. When we design and when our customers choose to buy them, **both sides make decisions that generate impact.**

To reduce our Scope 3 emissions, we've chosen to offer more than a product: **a vision, a responsible way of seeing and doing things.** Guided by our Sustainability Framework, we identified the components where we could meaningfully reduce our environmental footprint, without compromising Atlantis' identity.

This evolution is now visible across the collection. Several bestsellers will be available in new preferred-materials versions, marked with the **"-S" suffix**, maintaining the quality and style our community loves while lowering their impact. Recycled fibers, organic fabrics, low-impact solutions. **The same Atlantis spirit, made more responsible.**

Our commitment is also strengthened by **new certifications: GRS (Global Recycled Standard) and GOTS (Global Organic Textile Standard)**, ensuring high environmental and social criteria throughout our supply chain.

A transformation made of thoughtful choices and almost invisible details. Because the future is shaped by what you wear, and by what you choose not to leave behind. That's what we mean when we say: **make the responsible choice possible.**



# Headwear designed to look good and do good.



Atlantis Headwear was founded in the 1990s with a clear mission: **to create headwear that people could love, wear proudly, and truly make their own.** From the start, we aimed to be different, crafting something lasting, not just ‘another hat.’ As our caps gained popularity and reached customers worldwide, we recognized an opportunity to do more than produce high-quality headwear: **we wanted to make a meaningful positive impact.**

Sustainability became a central part of our story in 2021, when we set the ambition to shift our entire collection toward preferred materials, moving beyond isolated sustainable capsules. This commitment goes beyond simply switching materials; **it represents a comprehensive transformation.** Every element we use, down to the smallest details such as taping and buckram, has been carefully reconsidered to find sustainable alternatives without compromising the quality our customers expect.

This transformation has not only **reduced our environmental footprint** but also allowed us to listen closely to the market and improve the hats themselves. We refined their shapes, colors, and performance. Achieving this milestone required years of research, hundreds of tests, and unwavering dedication. Today, we are proud to offer headwear that not only looks good but also does good. With every cap we produce, **we are committed to contributing to a better, more sustainable future.**

# Egon

NEW

- Main Fabric: 80% organic cotton - 20% recycled cotton
- Texture: twill



TECH SPECS	ONE SIZE · 200 GSM · HOOK & LOOP CLOSURE
FEATURES	CURVED VISOR
SUSTAINABLE FEATURES	RECYCLED BUCKRAM · RECYCLED VISOR IMPACT REDUCTION: -20% CO <sub>2</sub> eq* · 0,683 kg CO <sub>2</sub> eq



Buckram 100% GRS Recycled Polyester  
Visor 100% GRS Recycled Polyethylene  
Certified by ICEA  
ICEA-TX- 3146



Taping 100% GRS Recycled Polyester  
Visor 100% GRS Recycled Polyethylene  
Certified by ICEA  
ICEA-TX- 3146



# Dad Hat-S Five

NEW

- Main Fabric: 80% organic cotton - 20% recycled cotton
- Texture: twill



TECH SPECS	ONE SIZE · 270 GSM · FULL METAL BUCKLE WITH METAL HOLE
FEATURES	MID VISOR · UNSTRUCTURED FRONT PANEL · GARMENT WASHING
SUSTAINABLE FEATURES	RETRAZE® RECYCLED VISOR · SELF FABRIC SWEATBAND IMPACT REDUCTION: -21% CO <sub>2</sub> eq* · 0,897 kg CO <sub>2</sub> eq

# Paka

NEW

- Main Fabric: 100% recycled polyester
- Texture: twill



TECH SPECS	ONE SIZE · 200 GSM · RECYCLED SNAPBACK CLOSURE
FEATURES	CURVED VISOR · ROPE AROUND BILL
SUSTAINABLE FEATURES	RECYCLED BUCKRAM · RECYCLED POLYESTER SWEATBAND · RETRAZE® RECYCLED VISOR · IMPACT REDUCTION: -19% CO <sub>2</sub> eq* · 0,646 kg CO <sub>2</sub> eq



**Global Recycled Standard**  
©TextileExchange

Main fabric, Taping, Buckram  
100% GRS Recycled Polyester  
Visor 100% GRS Recycled Polyethylene  
Certified by ICEA  
ICEA-TX- 3146

# Chao

NEW

- Main Fabric: 80% organic cotton - 20% recycled cotton
- Texture: canvas



TECH SPECS	ONE SIZE · 255 GSM · RECYCLED SNAPBACK CLOSURE
FEATURES	FLAT VISOR · GARMENT WASHING · UNSTRUCTURED FRONT PANEL ROPE AROUND BILL
SUSTAINABLE FEATURES	RETRAZE® RECYCLED VISOR · SELF FABRIC SWEATBAND IMPACT REDUCTION: -21% CO <sub>2</sub> eq* · 0,924 kg CO <sub>2</sub> eq



**Global Recycled Standard**  
©TextileExchange

Taping 100% GRS Recycled Polyester  
Visor 100% GRS Recycled Polyethylene  
Certified by ICEA  
ICEA-TX- 3146

# Darwin

NEW

- Main Fabric: 80% organic cotton - 20% recycled cotton
- Texture: canvas



TECH SPECS	ONE SIZE · 255 GSM · RIBBON WITH PLASTIC CLIP CLOSURE
FEATURES	FLAT VISOR · ADJUSTABLE VISOR · UNSTRUCTURED FRONT PANEL GARMENT WASHING
SUSTAINABLE FEATURES	RETRAZE® RECYCLED VISOR · SELF FABRIC SWEATBAND IMPACT REDUCTION: -20% CO <sub>2</sub> eq* · 0,792 kg CO <sub>2</sub> eq



Global Recycled Standard  
©TextileExchange  
Taping 100% GRS Recycled Polyester  
Visor 100% GRS Recycled Polyethylene  
Certified by ICEA  
ICEA-TX- 3146



Global Recycled Standard  
©TextileExchange  
Main Fabric, Taping, Buckram  
100% GRS Recycled Polyester  
Mesh 95% GRS Recycled Polyester  
Sweatband 91% GRS Recycled Polyester  
Visor 100% GRS Recycled Polyethylene  
Certified by ICEA  
ICEA-TX- 3146

# Nila

NEW

- Front & Bill: 100% recycled polyester
- Side & Back: 95% recycled polyester - 5% elastane
- Texture: microtwill



TECH SPECS	ONE SIZE · 150 GSM · FULLY CLOSED ON BACK
FEATURES	MID VISOR · UPF 50+ PROTECTION · WATER RESISTANT - PFC FREE
SUSTAINABLE FEATURES	RECYCLED BUCKRAM · RECYCLED ELASTIC SWEATBAND · RETRAZE® RECYCLED VISOR · IMPACT REDUCTION: -20% CO <sub>2</sub> eq* · 0,657 kg CO <sub>2</sub> eq

# Dempo

NEW

- Main Fabric: 100% recycled polyester
- Side & Back: 95% recycled polyester - 5% elastane
- Texture: jacquard



TECH SPECS	ONE SIZE · 162 GSM · RECYCLED RUBBER HOOK & LOOP CLOSURE
FEATURES	MID VISOR
SUSTAINABLE FEATURES	RECYCLED BUCKRAM · RECYCLED DRY-TECH SWEATBAND · RETRAZE® RECYCLED VISOR · IMPACT REDUCTION: -18% CO <sub>2</sub> eq* · 0,588 kg CO <sub>2</sub> eq



Main Fabric, Sweatband, Taping, Buckram  
100% GRS Recycled Polyester  
Mesh 95% GRS Recycled Polyester  
Visor 100% GRS Recycled Polyethylene  
Certified by ICEA  
ICEA-TX- 3146

# Teon

NEW

- Front & Bill: 50% recycled cotton - 50% cotton
- Side & Back: 100% recycled polyester
- Texture: twill



TECH SPECS	ONE SIZE · 260 GSM · HOOK & LOOP CLOSURE
FEATURES	MID VISOR · UNSTRUCTURED FRONT PANEL · PIGMENT DYEING · SOFT MESH
SUSTAINABLE FEATURES	RECYCLED POLYESTER SWEATBAND · RECYCLED VISOR IMPACT REDUCTION: -19% CO <sub>2</sub> eq* · 0,660 kg CO <sub>2</sub> eq



Main Fabric 50% GRS Recycled Cotton  
Mesh, Sweatband, Taping,  
100% GRS Recycled Polyester  
Visor 100% GRS Recycled Polyethylene  
Certified by ICEA  
ICEA-TX- 3146

# Iraya

NEW

- Main Fabric: 50% recycled cotton - 50% cotton
- Texture: denim twill



TECH SPECS	ONE SIZE · 339 GSM · FULL METAL BUCKLE WITH METAL HOLE
FEATURES	MID VISOR · UNSTRUCTURED FRONT PANEL
SUSTAINABLE FEATURES	DYSTAR® DYEING · RETRAZE® RECYCLED VISOR · ORGANIC COTTON SWEATBAND · IMPACT REDUCTION: -16% CO <sub>2</sub> eq* · 0,871 kg CO <sub>2</sub> eq



Main Fabric 50% GRS Recycled Cotton  
Taping 100% GRS Recycled Polyester  
Visor 100% GRS Recycled Polyethylene  
Certified by ICEA  
ICEA-TX- 3146



Main Fabric 50% GRS Recycled Cotton  
Taping 100% GRS Recycled Polyester  
Visor 100% GRS Recycled Polyethylene  
Certified by ICEA  
ICEA-TX- 3146

# Ruby

NEW

- Main Fabric: 50% recycled cotton - 50% cotton
- Texture: denim twill



TECH SPECS	ONE SIZE · 339 GSM · FULL METAL BUCKLE WITH METAL HOLE
FEATURES	FLAT VISOR · ADJUSTABLE VISOR · UNSTRUCTURED FRONT PANEL
SUSTAINABLE FEATURES	DYSTAR® DYEING · RETRAZE® RECYCLED VISOR · ORGANIC COTTON SWEATBAND · IMPACT REDUCTION: -20% CO <sub>2</sub> eq* · 0,934 kg CO <sub>2</sub> eq

# Dana

NEW

- Main Fabric: 50% recycled cotton - 50% cotton
- Texture: denim twill



DARK DENIM DENIM LIGHT DENIM

TECH SPECS	ONE SIZE · 339 GSM
FEATURES	SOFT CROWN
SUSTAINABLE FEATURES	DYSTAR® DYEING · ORGANIC COTTON SWEATBAND IMPACT REDUCTION: -17% CO <sub>2</sub> eq* · 1,320 kg CO <sub>2</sub> eq



Main Fabric 50% GRS Recycled Cotton  
Taping 100% GRS Recycled Polyester  
Certified by ICEA  
ICEA-TX- 3146

# Severny

NEW

- Main Fabric: 100% recycled polyester
- Texture: corduroy



BROWN BLACK NAVY OLIVE STONE

TECH SPECS	ONE SIZE · 230 GSM · RECYCLED SNAPBACK CLOSURE
FEATURES	FLAT VISOR · ADJUSTABLE VISOR · UNSTRUCTURED FRONT PANEL
SUSTAINABLE FEATURES	RECYCLED POLYESTER SWEATBAND · RETRAZE® RECYCLED VISOR IMPACT REDUCTION: -20% CO <sub>2</sub> eq* · 0,568 kg CO <sub>2</sub> eq



Main fabric, Sweatband, Taping, Buckram  
100% GRS Recycled Polyester  
Visor 100% GRS Recycled Polyethylene  
Certified by ICEA  
ICEA-TX- 3146

# Cumbre

NEW

- Main Fabric: 100% recycled polyester
- Lining: 100% recycled polyester
- Texture: corduroy



TECH SPECS	ONE SIZE · 230 GSM
FEATURES	SOFT CROWN
SUSTAINABLE FEATURES	RECYCLED POLYESTER SWEATBAND IMPACT REDUCTION: -20% CO <sub>2</sub> eq* · 0,654 kg CO <sub>2</sub> eq



Main Fabric, Lining  
100% GRS Recycled Polyester  
Certified by ICEA  
ICEA-TX- 3146



# Teide

NEW

- Main Fabric: 100% textile-to-textile recycled polyester
- Texture: microfiber



TECH SPECS	ONE SIZE · 105 GSM · ADJUSTABLE CLOSURE WITH RECYCLED ELASTIC BAND AND METAL BUCKLE
FEATURES	MID VISOR · CONTRAST COLOR UNDERBILL · SOFT DETAIL ON VISOR MOISTURE-WICKING
SUSTAINABLE FEATURES	RECYCLED DRY-TECH SWEATBAND · RECYCLED VISOR IMPACT REDUCTION: -15% CO <sub>2</sub> eq* · 0,445 kg CO <sub>2</sub> eq



Main Fabric, Sweatband  
100% GRS Recycled Polyester  
Band 91% GRS Recycled Polyester  
Visor 100% GRS Recycled Polyethylene  
Certified by ICEA  
ICEA-TX- 3146



# Gorely

• Main Fabric: 100% recycled polyester

NEW



TECH SPECS	ONE SIZE · 95 G
FEATURES	SEAMLESS · CHUNKY LOOK · MELANGE EFFECT
SUSTAINABLE FEATURES	IMPACT REDUCTION: -23% CO <sub>2</sub> eq* · 0,769 kg CO <sub>2</sub> eq



# Nantai

• Main Fabric: 100% recycled merino wool

NEW



TECH SPECS	23,5 x 50,5 CM · 150 GSM
FEATURES	THERMAL REGULATION · ANTIBACTERIAL PROPERTIES · COMPACT DESIGN
SUSTAINABLE FEATURES	IMPACT REDUCTION: -79% CO <sub>2</sub> eq* · 0,919 kg CO <sub>2</sub> eq



# Baru

NEW

• Main Fabric: 100% recycled merino wool



BLACK

NAVY

TECH SPECS	ONE SIZE · 150 GSM
FEATURES	THERMAL REGULATION · ANTIBACTERIAL PROPERTIES · COMPACT DESIGN
SUSTAINABLE FEATURES	IMPACT REDUCTION: -73% CO <sub>2</sub> eq* · 0,709 kg CO <sub>2</sub> eq



100% GRS Recycled Polyester  
Certified by ICEA  
ICEA-TX- 3146



STANDARD  
100  
SH020 220679  
TESTEX

# Kid Wind-S with Pompom

• Main Fabric: 100% recycled polyester

NEW



LIGHT BLUE

BLACK

NAVY

PINK

ROYAL

TECH SPECS	KIDS SIZE · 65 G
SUSTAINABLE FEATURES	IMPACT REDUCTION: -22% CO <sub>2</sub> eq* · 0,550 kg CO <sub>2</sub> eq

# Bolt-S

NEW

- Main Fabric: 62% recycled polyester - 38% polyester
- Texture: twill



TECH SPECS	ONE SIZE · 200 GSM · HIGH QUALITY HOOK & LOOP CLOSURE
FEATURES	CURVED VISOR · STRETCHABLE FABRIC
SUSTAINABLE FEATURES	RECYCLED BUCKRAM · RECYCLED DRY-TECH SWEATBAND · RETRAZE® RECYCLED VISOR · IMPACT REDUCTION: -16% CO <sub>2</sub> eq* · 0,617 kg CO <sub>2</sub> eq



Main Fabric 62% GRS Recycled Polyester  
Sweatband, Taping, Buckram  
100% GRS Recycled Polyester  
Visor 100% GRS Recycled Polyethylene  
Certified by ICEA  
ICEA-TX- 3146

# Rapper Jersey-S

NEW

- Front & Bill: 95% recycled polyester - 5% elastane
- Side & Back: 100% recycled polyester
- Texture: jersey



TECH SPECS	ONE SIZE · 200 GSM · RECYCLED SNAPBACK CLOSURE
FEATURES	MID VISOR
SUSTAINABLE FEATURES	RECYCLED BUCKRAM · RECYCLED POLYESTER SWEATBAND · RETRAZE® RECYCLED VISOR · IMPACT REDUCTION: -19% CO <sub>2</sub> eq* · 0,637 kg CO <sub>2</sub> eq



Main Fabric 95% GRS Recycled Polyester  
Mesh, Sweatband, Taping, Buckram  
100% GRS Recycled Polyester  
Visor 100% GRS Recycled Polyethylene  
Certified by ICEA  
ICEA-TX- 3146



# Action-S

- Main Fabric: 80% organic cotton - 20% recycled cotton
- Texture: twill



TECH SPECS	ONE SIZE · 280 GSM · SUNDAY BUCKLE CLOSURE
FEATURES	CURVED VISOR · METAL EYELETS · GARMENT WASHING UNSTRUCTURED FRONT PANEL
SUSTAINABLE FEATURES	RETRAZE® RECYCLED VISOR IMPACT REDUCTION: -22% CO <sub>2</sub> eq* · 0,850 kg CO <sub>2</sub> eq



# Andy

- Main Fabric: 100% recycled polyester



TECH SPECS	ONE SIZE · 82 G · SEAMLESS
SUSTAINABLE FEATURES	IMPACT REDUCTION: -22% CO <sub>2</sub> eq* · 0,679 kg CO <sub>2</sub> eq

# Army-S

- Main Fabric: 80% organic cotton - 20% recycled cotton
- Lining: 100% recycled polyester
- Texture: ripstop



BLACK

OLIVE

TECH SPECS	ONE SIZE · 215 GSM · HOOK & LOOP CLOSURE
FEATURES	CURVED VISOR · GARMENT WASHING
SUSTAINABLE FEATURES	R-PET SWEATBAND · RECYCLED VISOR IMPACT REDUCTION: -20% CO <sub>2</sub> eq* · 0,830 kg CO <sub>2</sub> eq



**Global Recycled Standard**  
©TextMeischange  
Lining, Sweatband, Taping  
100% GRS Recycled Polyester  
Certified by ICEA  
ICEA-TX-3146

# Bandana Goal-S

- Main Fabric: 100% recycled polyester



TECH SPECS	50x50 · 115 G
SUSTAINABLE FEATURES	IMPACT REDUCTION: -18% CO <sub>2</sub> eq* · 0,398 kg CO <sub>2</sub> eq



**Global Recycled Standard**  
©TextMeischange  
100% GRS Recycled Polyester  
Certified by ICEA  
ICEA-TX-3146

# Bank Five-S

- Main Fabric: 100% recycled polyester
- Bill & Underbill: 100% recycled polyester
- Texture: microfiber



TECH SPECS	ONE SIZE · 120 GSM · RECYCLED SNAPBACK CLOSURE
FEATURES	FLAT VISOR · LASER HOLES
SUSTAINABLE FEATURES	RECYCLED BUCKRAM · R-PET SWEATBAND · RETRAZE® RECYCLED VISOR IMPACT REDUCTION: -22% CO <sub>2</sub> eq* · 0,579 kg CO <sub>2</sub> eq



Main Fabric, Sweatband, Taping, Buckram  
100% GRS Recycled Polyester  
Visor 100% GRS Recycled Polyethylene  
Certified by ICEA  
ICEA-TX-3146



Main Fabric, Sweatband, Taping, Buckram  
100% GRS Recycled Polyester  
Visor 100% GRS Recycled Polyethylene  
Certified by ICEA  
ICEA-TX-3146

# Beat-S

- Main Fabric: 100% recycled polyester
- Texture: twill



TECH SPECS	ONE SIZE · 300 GSM · RECYCLED SNAPBACK CLOSURE
FEATURES	MID VISOR
SUSTAINABLE FEATURES	RECYCLED BUCKRAM · R-PET SWEATBAND · RETRAZE® RECYCLED VISOR IMPACT REDUCTION: -23% CO <sub>2</sub> eq* · 0,612 kg CO <sub>2</sub> eq

# Bill-S

- Main Fabric: 100% recycled polyester
- Lining: 100% recycled polyester



DARK GREY      BLACK      NAVY

TECH SPECS	ONE SIZE · 105 G
SUSTAINABLE FEATURES	FULL R-PET FLEECE LINING · POLARTEC® IMPACT REDUCTION: -23% CO <sub>2</sub> eq* · 0,846 kg CO <sub>2</sub> eq



# Birk

- Main Fabric: 100% recycled polyester



DARK GREY      BLACK      NAVY      ROYAL

TECH SPECS	ONE SIZE · 30 G
FEATURES	COMPACT DESIGN · FLATLOCK SEAMS
SUSTAINABLE FEATURES	IMPACT REDUCTION: -20% CO <sub>2</sub> eq* · 0,292 kg CO <sub>2</sub> eq



# Bond-S

• Main Fabric: 97% recycled polyester - 3% elastane



WHITE      BLACK      NAVY

TECH SPECS	ONE SIZE · 190 GSM · QUALITY HOOK & LOOP CLOSURE
FEATURES	CURVED VISOR · BONDED TAPING · WATER RESISTANT - PFC FREE UPF50+
SUSTAINABLE FEATURES	RECYCLED DRY-TECH · RECYCLED BUCKRAM IMPACT REDUCTION: -21% CO <sub>2</sub> eq* · 0,591 kg CO <sub>2</sub> eq



Main Fabric 97% GRS Recycled Polyester  
Sweatband, Taping, Buckram  
100% GRS Recycled Polyester  
Visor 100% GRS Recycled Polyethylene  
Certified by ICEA  
ICEA-TX-3146



# Brad-S

• Main Fabric: 100% recycled polyester yarn



LT GREY MELANGE      DK GREY MELANGE      BLACK      NAVY      OLIVE

TECH SPECS	ONE SIZE · 74 G
FEATURES	DUAL STYLE · BEANIE WITH RIBS
SUSTAINABLE FEATURES	IMPACT REDUCTION: -22% CO <sub>2</sub> eq* · 0,630 kg CO <sub>2</sub> eq

# Breezy-S

• Main Fabric: 100% recycled nylon



TECH SPECS	ONE SIZE · 120 GSM · RECYCLED SNAPBACK CLOSURE
FEATURES	MID VISOR · WATER RESISTANT - PFC FREE · LASER HOLES
SUSTAINABLE FEATURES	RETRAZE® RECYCLED VISOR · RECYCLED DRY-TECH SWEATBAND RECYCLED BUCKRAM · IMPACT REDUCTION: -33% CO <sub>2</sub> eq* 0,431 kg CO <sub>2</sub> eq



**Global Recycled Standard**  
©TextileExchange

Main Fabric 100% GRS Recycled Nylon  
Sweatband, Taping, Buckram  
100% GRS Recycled Polyester  
Visor 100% GRS Recycled Polyethylene

Certified by ICEA  
ICEA-TX-3146

# Bryce

• Main Fabric: 100% recycled polyester  
• Side & Back: 100% recycled polyester  
• Texture: twill



TECH SPECS	ONE SIZE · 200 GSM · RECYCLED SNAPBACK CLOSURE
FEATURES	MID VISOR
SUSTAINABLE FEATURES	RECYCLED BUCKRAM · RETRAZE® RECYCLED VISOR SELF FABRIC SWEATBAND · IMPACT REDUCTION: -21% CO <sub>2</sub> eq* 0,495 kg CO <sub>2</sub> eq



**Global Recycled Standard**  
©TextileExchange

Main Fabric, Taping, Buckram  
100% GRS Recycled Polyester  
Mesh 72% GRS Recycled Polyester  
Visor 100% GRS Recycled Polyethylene

Certified by ICEA  
ICEA-TX-3146

# Bucket Cotton-S

- Main Fabric: 80% organic cotton - 20% recycled cotton
- Texture: twill



TECH SPECS	ONE SIZE · 200 GSM
SUSTAINABLE FEATURES	SELF FABRIC SWEATBAND · IMPACT REDUCTION: -15% CO <sub>2</sub> eq* 0,952 kg CO <sub>2</sub> eq



# Bucket Pocket-S

- Main Fabric: 100% recycled polyester
- Texture: ripstop



TECH SPECS	ONE SIZE · 85 GSM
FEATURES	REVERSIBLE · FOLDABLE · LOOP STRING · WATER RESISTANT PFC FREE
SUSTAINABLE FEATURES	IMPACT REDUCTION: -19% CO <sub>2</sub> eq* · 0,473 kg CO <sub>2</sub> eq

# Champion-S

- Main Fabric: 100% recycled polyester
- Texture: twill



BLACK

NAVY

TECH SPECS	ONE SIZE · 300 GSM · FULL METAL BUCKLE WITH SEWN HOLE
FEATURES	CURVED VISOR
SUSTAINABLE FEATURES	RETRAZE® RECYCLED VISOR · RECYCLED BUCKRAM IMPACT REDUCTION: -21% CO <sub>2</sub> eq* · 0,641 kg CO <sub>2</sub> eq



Main Fabric, Sweatband, Taping, Buckram  
100% GRS Recycled Polyester  
Visor 100% GRS Recycled Polyethylene  
Certified by ICEA  
ICEA-TX-3146

# Cordy-S

- Main Fabric: 100% recycled polyester
- Texture: corduroy



GREY

BROWN

BLACK

NAVY

STONE

BURGUNDY

OLIVE

TECH SPECS	ONE SIZE · 230 GSM · FULL METAL BUCKLE WITH METAL HOLE
FEATURES	CURVED VISOR
SUSTAINABLE FEATURES	RECYCLED BUCKRAM · R-PET SWEATBAND · RETRAZE® RECYCLED VISOR IMPACT REDUCTION: -21% CO <sub>2</sub> eq* · 0,556 kg CO <sub>2</sub> eq



Main Fabric, Sweatband, Taping, Buckram  
100% GRS Recycled Polyester  
Visor 100% GRS Recycled Polyethylene  
Certified by ICEA  
ICEA-TX-3146

# Creep-S

- Main Fabric: 100% recycled polyester
- Texture: corduroy



TECH SPECS	ONE SIZE · 215 GSM · FULL METAL BUCKLE WITH METAL HOLE
FEATURES	MID VISOR · UNSTRUCTURED FRONT PANEL
SUSTAINABLE FEATURES	R-PET SWEATBAND · RETRAZE® RECYCLED VISOR IMPACT REDUCTION: -19% CO <sub>2</sub> eq* · 0,534 kg CO <sub>2</sub> eq



**Global Recycled Standard**  
© TextileExchange

Main Fabric, Sweatband, Taping  
100% GRS Recycled Polyester  
Visor 100% GRS Recycled Polyethylene

Certified by ICEA  
ICEA-TX-3146



**Global Recycled Standard**  
© TextileExchange

Taping 100% GRS Recycled Polyester  
Visor 100% GRS Recycled Polyethylene

Certified by ICEA  
ICEA-TX-3146

# Cruz

- Main Fabric: 80% organic cotton - 20% recycled cotton
- Texture: canvas



TECH SPECS	ONE SIZE · 255 GSM · RECYCLED SNAPBACK CLOSURE
FEATURES	FLAT VISOR · GARMENT WASHING · UNSTRUCTURED FRONT PANEL
SUSTAINABLE FEATURES	RETRAZE® RECYCLED VISOR · SELF FABRIC SWEATBAND IMPACT REDUCTION: -23% CO <sub>2</sub> eq* · 0,867 kg CO <sub>2</sub> eq

# Dad Hat-S

- Main Fabric: 80% organic cotton - 20% recycled cotton
- Texture: twill



TECH SPECS	ONE SIZE · 270 GSM · FULL METAL BUCKLE WITH METAL HOLE
FEATURES	MID VISOR · GARMENT WASHING · UNSTRUCTURED FRONT PANEL
SUSTAINABLE FEATURES	RETRAZE® RECYCLED VISOR · SELF FABRIC SWEATBAND IMPACT REDUCTION: -22% CO <sub>2</sub> eq* · 0,839 kg CO <sub>2</sub> eq



# Dad Hat Destroyed-S

- Main Fabric: 80% organic cotton - 20% recycled cotton
- Texture: twill



TECH SPECS	ONE SIZE · 270 GSM · FULL METAL BUCKLE WITH METAL HOLE
FEATURES	MID VISOR · GARMENT WASHING · UNSTRUCTURED FRONT PANEL
SUSTAINABLE FEATURES	RETRAZE® RECYCLED VISOR · SELF FABRIC SWEATBAND IMPACT REDUCTION: -22% CO <sub>2</sub> eq* · 0,893 kg CO <sub>2</sub> eq



# Digg-S

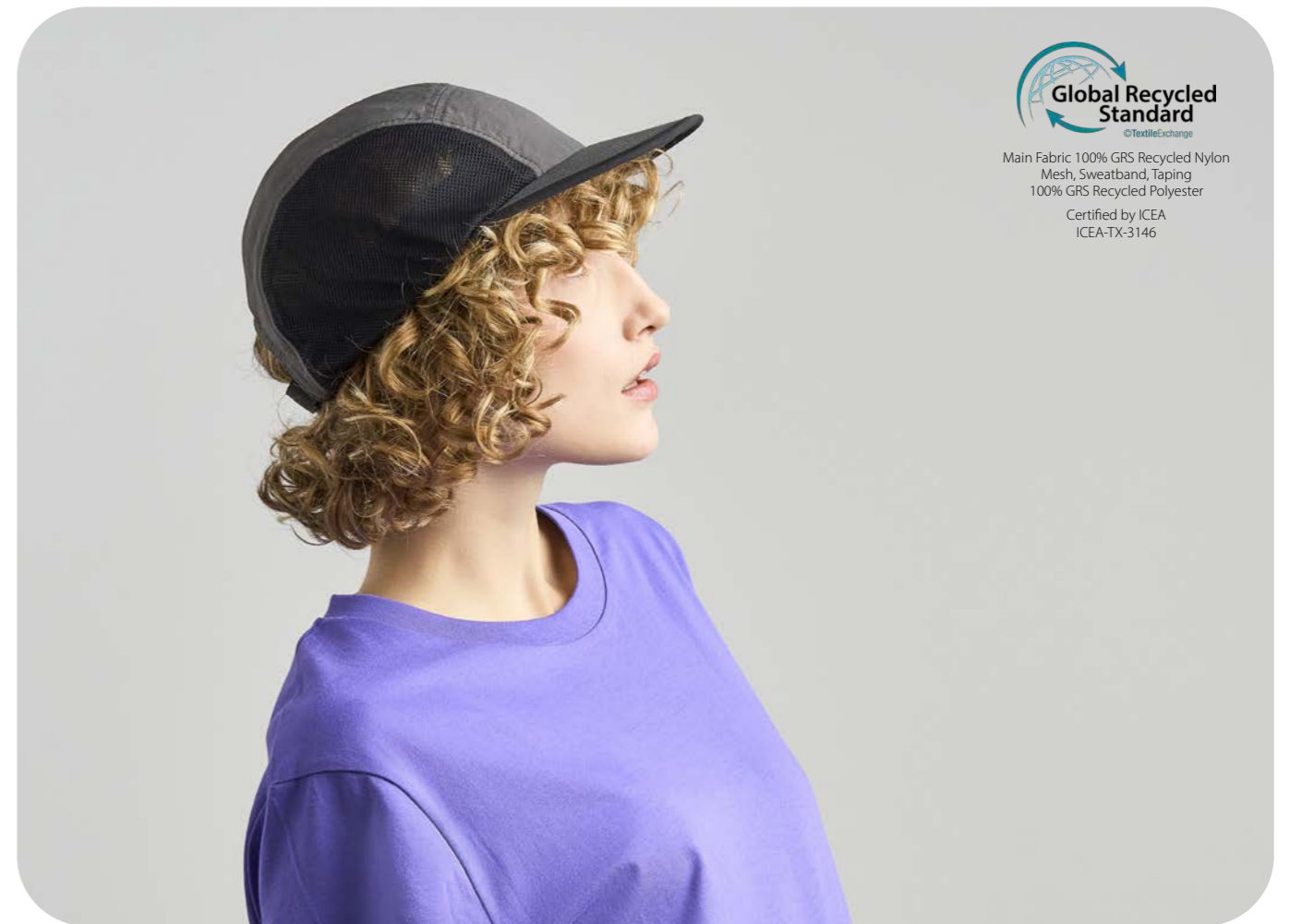
- Main Fabric: 50% recycled cotton - 50% virgin cotton
- Texture: twill



TECH SPECS	ONE SIZE · 260 GSM · FULL METAL BUCKLE WITH METAL HOLE
FEATURES	MID VISOR · UNSTRUCTURED FRONT PANEL · PIGMENT DYED FABRIC
SUSTAINABLE FEATURES	RECYCLED VISOR · R-PET SWEATBAND IMPACT REDUCTION: -18% CO <sub>2</sub> eq* · 0,690 kg CO <sub>2</sub> eq



Main Fabric 50% GRS Recycled Cotton  
Sweatband, Taping  
100% GRS Recycled Polyester  
Visor 100% GRS Recycled Polyethylene  
Certified by ICEA  
ICEA-TX-3146



Main Fabric 100% GRS Recycled Nylon  
Mesh, Sweatband, Taping  
100% GRS Recycled Polyester  
Certified by ICEA  
ICEA-TX-3146

# Erie

- Front&Bill: 100% recycled nylon
- Side & Back: 100% recycled polyester



TECH SPECS	ONE SIZE · 120 GSM · RIBBON WITH PLASTIC CLOSURE
FEATURES	FLAT VISOR · SOFT VISOR · WATER RESISTANT - PFC FREE UNSTRUCTURED FRONT PANEL
SUSTAINABLE FEATURES	RECYCLED DRY-TECH SWEATBAND · IMPACT REDUCTION: -20% CO <sub>2</sub> eq* 0,389 kg CO <sub>2</sub> eq

# Estoril-S

- Main Fabric: 100% recycled polyester
- Texture: jacquard



TECH SPECS	ONE SIZE · 100 GSM · HIGH QUALITY HOOK&LOOP WITH PLASTIC LOOP
FEATURES	CURVED VISOR · HALF PIPING ON VISOR
SUSTAINABLE FEATURES	RECYCLED BUCKRAM · R-PET SWEATBAND · RETRAZE® RECYCLED VISOR IMPACT REDUCTION: -21% CO <sub>2</sub> eq* · 0,499 kg CO <sub>2</sub> eq



Main Fabric, Sweatband, Taping, Buckram  
100% GRS Recycled Polyester  
Visor 100% GRS Recycled Polyethylene  
Certified by ICEA  
ICEA-TX-3146

# Fam-S

- Main Fabric: 81% recycled polyester - 19% polyester
- Underbill: 100% recycled polyester
- Texture: suede



TECH SPECS	ONE SIZE · 135 GSM · FULL METAL BUCKLE WITH METAL HOLE
FEATURES	MID VISOR
SUSTAINABLE FEATURES	RECYCLED BUCKRAM · R-PET SWEATBAND · RETRAZE® RECYCLED VISOR IMPACT REDUCTION: -19% CO <sub>2</sub> eq* · 0,527 kg CO <sub>2</sub> eq



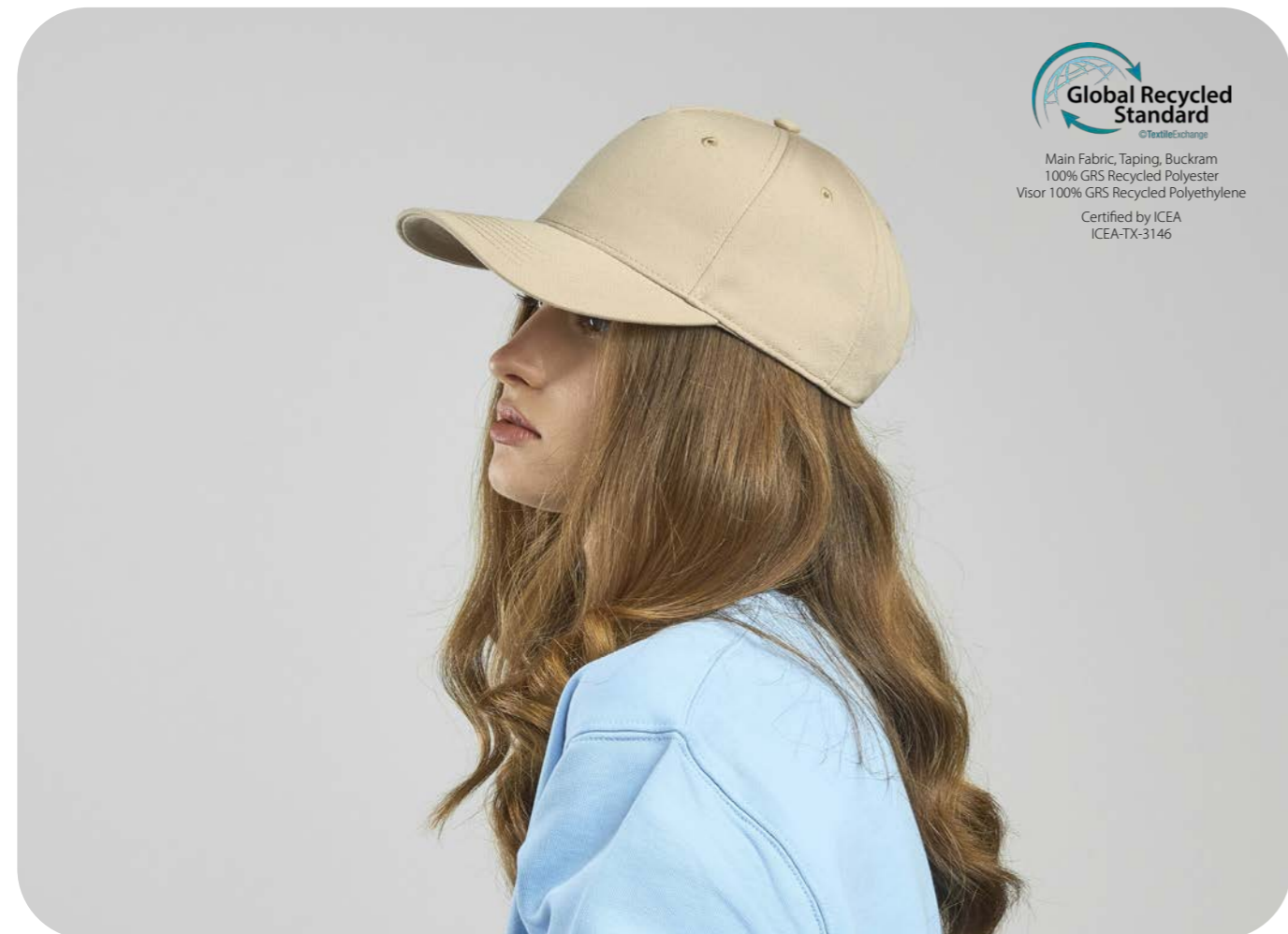
Main Fabric 81% GRS Recycled Polyester  
Underbill, Sweatband, Taping, Buckram  
100% GRS Recycled Polyester  
Visor 100% GRS Recycled Polyethylene  
Certified by ICEA  
ICEA-TX-3146

# Fiji

- Main Fabric: 100% recycled polyester
- Texture: twill



TECH SPECS	ONE SIZE · 200 GSM · HOOK & LOOP CLOSURE
FEATURES	CURVED VISOR
SUSTAINABLE FEATURES	RECYCLED BUCKRAM · RETRAZE® RECYCLED VISOR SELF FABRIC SWEATBAND · IMPACT REDUCTION: -22% CO <sub>2</sub> eq* 0,552 kg CO <sub>2</sub> eq



# Flash-S

- Main Fabric: 95% recycled polyester - 5% elastane
- Texture: jersey



TECH SPECS	ONE SIZE · 200 G
FEATURES	STRETCHABLE FABRIC
SUSTAINABLE FEATURES	IMPACT REDUCTION: -25% CO <sub>2</sub> eq* · 0,425 kg CO <sub>2</sub> eq

# Forever-S

- Main Fabric: 80% organic cotton - 20% recycled cotton
- Texture: twill



TECH SPECS	S/M - L/XL · 280 GSM
FEATURES	GARMENT WASHING
SUSTAINABLE FEATURES	SELF FABRIC SWEATBAND · IMPACT REDUCTION: -21% CO <sub>2</sub> eq* 1,330 kg CO <sub>2</sub> eq




  
 Taping 100% GRS Recycled Polyester
   
 Certified by ICEA
   
 ICEA-TX-3146

# Fraser

- Main Fabric: 100% organic cotton
- Texture: twill



TECH SPECS	ONE SIZE · 260 GSM · FULL METAL BUCKLE WITH METAL HOLE
FEATURES	MID VISOR · GARMENT WASHING · UNSTRUCTURED FRONT PANEL
SUSTAINABLE FEATURES	RETRAZE® RECYCLED VISOR · SELF FABRIC SWEATBAND IMPACT REDUCTION: -12% CO <sub>2</sub> eq* · 0,788 kg CO <sub>2</sub> eq




  
 Organic Certified by ICEA
   
 GOTS-11099

# Freedom Basic-S

• Main Fabric: 100% recycled polyester



WHITE



BLACK



NAVY



RED



ROYAL

TECH SPECS

49x25 · 130 G

SUSTAINABLE FEATURES

REPREVE® · IMPACT REDUCTION: -18% CO<sub>2</sub>eq\* · 0,380 kg CO<sub>2</sub> eq



# Gatsby Street-S

- Main Fabric: 80% organic cotton - 20% recycled cotton
- Texture: canvas



KHAKI



BLACK



NAVY



OLIVE

TECH SPECS

ONE SIZE · 260 GSM · FULLY CLOSED WITH BUCKLE

FEATURES

MID VISOR · GARMENT WASHING

SUSTAINABLE FEATURES

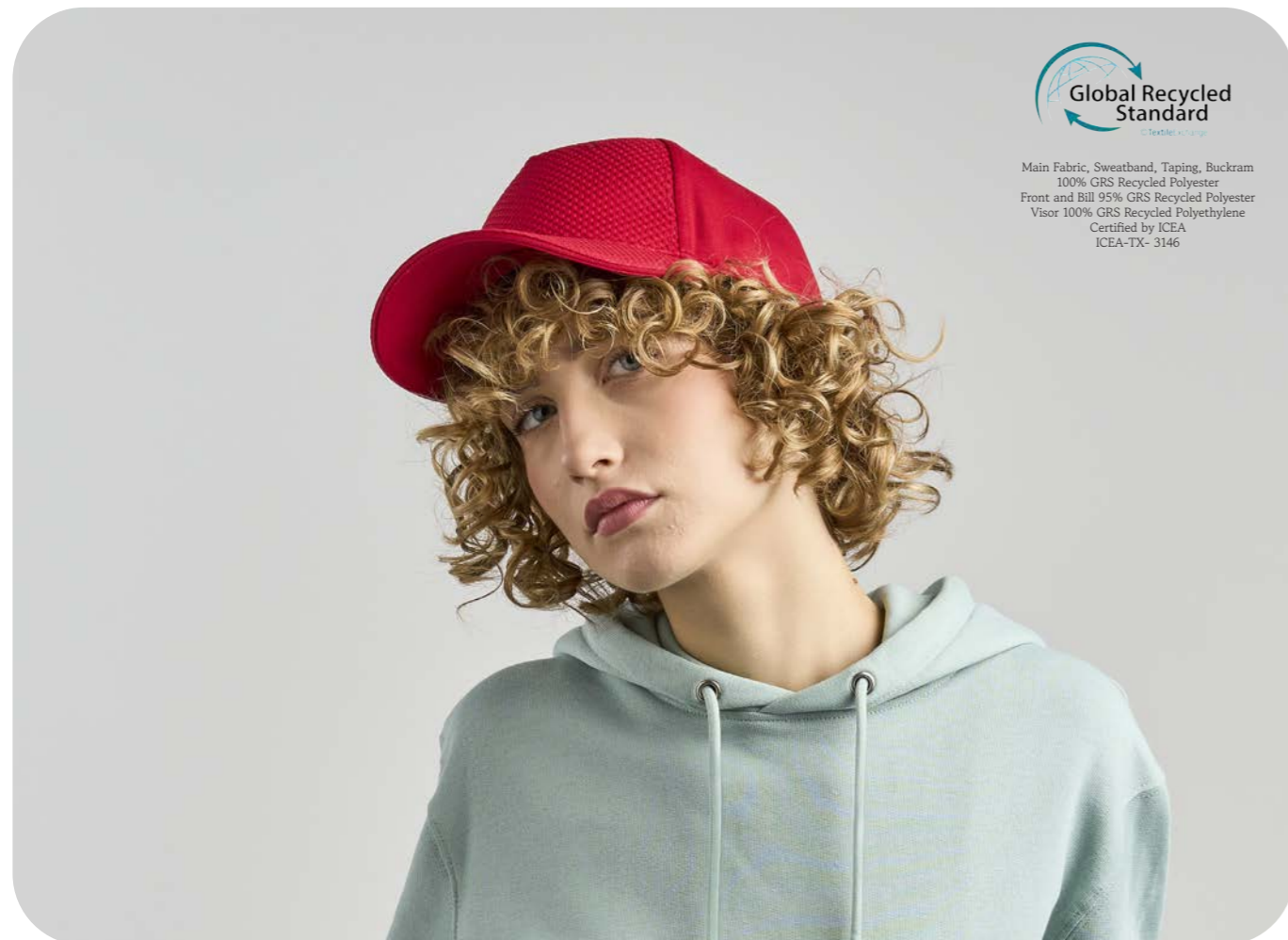
SELF FABRIC SWEATBAND · RECYCLED VISOR  
IMPACT REDUCTION: -20 CO<sub>2</sub>eq\* · 1,050 kg CO<sub>2</sub> eq

# Gear-S

- Main Fabric: 100% recycled polyester
- Front & Bill: 95% recycled polyester - 5% elastane
- Texture: debossed



TECH SPECS	ONE SIZE · 230 GSM · HOOK & LOOP CLOSURE
FEATURES	CURVED VISOR
SUSTAINABLE FEATURES	RECYCLED BUCKRAM · R-PET SWEATBAND · RETRAZE® RECYCLED VISOR IMPACT REDUCTION: -15% CO <sub>2</sub> eq* · 0,600 kg CO <sub>2</sub> eq



Main Fabric, Sweatband, Taping, Buckram  
100% GRS Recycled Polyester  
Front and Bill 95% GRS Recycled Polyester  
Visor 100% GRS Recycled Polyethylene  
Certified by ICEA  
ICEA-TX- 3146

# Geo

- Main Fabric: 100% recycled polyester
- Texture: twill



TECH SPECS	ONE SIZE · 200 GSM
SUSTAINABLE FEATURES	SELF FABRIC SWEATBAND · IMPACT REDUCTION: -20% CO <sub>2</sub> eq* 0,607 kg CO <sub>2</sub> eq



100% GRS Recycled Polyester  
Certified by ICEA  
ICEA-TX-3146

# Ghibli

- Main Fabric: 100% recycled nylon
- Lining: 100% recycled polyester



TECH SPECS	ONE SIZE · 120 GSM
FEATURES	REVERSIBLE · WATER RESISTANT - PFC FREE
SUSTAINABLE FEATURES	FULL R-PET FLEECE LINING · IMPACT REDUCTION: -46% CO <sub>2</sub> eq* 0,582 kg CO <sub>2</sub> eq



# Globe Trotter-S

- Main Fabric: 80% organic cotton - 20% recycled cotton
- Texture: canvas



TECH SPECS	S/M - L/XL · 260 GSM
FEATURES	METAL EYELETS · GARMENT WASHING
SUSTAINABLE FEATURES	SELF FABRIC SWEATBAND · IMPACT REDUCTION: -22% CO <sub>2</sub> eq* 1,860 kg CO <sub>2</sub> eq

# Helpy-S

- Main Fabric: 100% recycled polyester
- Texture: twill



TECH SPECS	ONE SIZE · 200 GSM · HOOK & LOOP CLOSURE REFLECT STRAP
FEATURES	CURVED VISOR · WATER RESISTANT - PFC FREE · UPF 50+ PROTECTION REFLECTIVE BAND · CONTRAST COLOR UNDERBILL
SUSTAINABLE FEATURES	RECYCLED BUCKRAM · RETRAZE® RECYCLED VISOR · R-PET SWEATBAND IMPACT REDUCTION: -21% CO <sub>2</sub> eq* · 0,555 kg CO <sub>2</sub> eq



# Hit-S

- Main Fabric: 80% organic cotton - 20% recycled cotton
- Texture: twill



TECH SPECS	ONE SIZE · 270 GSM · SUNDAY BUCKLE CLOSURE
FEATURES	CURVED VISOR
SUSTAINABLE FEATURES	RECYCLED BUCKRAM · RETRAZE® RECYCLED VISOR SELF FABRIC SWEATBAND · IMPACT REDUCTION: -22% CO <sub>2</sub> eq* 0,951 kg CO <sub>2</sub> eq



# Holly

• Main Fabric: 100% Polylana® polyester



TECH SPECS	ONE SIZE · 58 G
SUSTAINABLE FEATURES	POLYLANA® · IMPACT REDUCTION: -55% CO <sub>2</sub> eq* · 0,487 kg CO <sub>2</sub> eq



# Hotty-S

• Main Fabric: 100% recycled polyester



TECH SPECS	28x25 CM · 230 GSM · ELASTIC STRING WITH PLASTIC STOPPER
FEATURES	COMPACT DESIGN
SUSTAINABLE FEATURES	IMPACT REDUCTION: -21% CO <sub>2</sub> eq* · 0,438 kg CO <sub>2</sub> eq

# Isar

- Main Fabric: 100% recycled polyester
- Texture: jacquard



TECH SPECS	ONE SIZE · 100 GSM · HOOK & LOOP CLOSURE
FEATURES	MID VISOR · UNSTRUCTURED FRONT PANEL
SUSTAINABLE FEATURES	R-PET SWEATBAND · RETRAZE® RECYCLED VISOR IMPACT REDUCTION: -20% CO <sub>2</sub> eq* · 0,436 kg CO <sub>2</sub> eq



# James

- Main Fabric: 100% recycled polyester
- Texture: twill



TECH SPECS	ONE SIZE · 200 GSM · RECYCLED SNAPBACK CLOSURE
FEATURES	FLAT VISOR
SUSTAINABLE FEATURES	RECYCLED BUCKRAM · RETRAZE® RECYCLED VISOR SELF FABRIC SWEATBAND · IMPACT REDUCTION: -21% CO <sub>2</sub> eq* 0,587 kg CO <sub>2</sub> eq



# Joshua

- Main Fabric: 100% recycled polyester
- Texture: twill



TECH SPECS	ONE SIZE · 200 GSM · HOOK & LOOP CLOSURE
FEATURES	CURVED VISOR
SUSTAINABLE FEATURES	RECYCLED BUCKRAM · RETRAZE® RECYCLED VISOR SELF FABRIC SWEATBAND · IMPACT REDUCTION: -21% CO <sub>2</sub> eq* 0,542 kg CO <sub>2</sub> eq



**Global Recycled Standard**  
©TextileExchange

Main Fabric, Taping, Buckram  
100% GRS Recycled Polyester  
Visor 100% GRS Recycled Polyethylene

Certified by ICEA  
ICEA-TX-3146



**Global Recycled Standard**  
©TextileExchange

Main Fabric 97% GRS Recycled Polyester  
Sweatband, Taping, Buckram  
100% GRS Recycled Polyester  
Visor 100% GRS Recycled Polyethylene

Certified by ICEA  
ICEA-TX-3146

# Kai

- Main Fabric: 97% recycled polyester - 3% elastane



TECH SPECS	ONE SIZE · 195 GSM · HOOK&LOOP CLOSURE PLASTIC LOOP ELASTIC STRING
FEATURES	MID VISOR · UPF50+ · SOFT CROWN · WATER RESISTANT - PFC FREE UNSTRUCTURED FRONT PANEL
SUSTAINABLE FEATURES	RETRAZE® RECYCLED VISOR · RECYCLED DRY-TECH SWEATBAND IMPACT REDUCTION: -19% CO <sub>2</sub> eq* · 0,543 kg CO <sub>2</sub> eq

# Kid Fraser

- Main Fabric: 100% organic cotton
- Texture: twill



TECH SPECS	KIDS SIZE · 260 GSM · HOOK & LOOP CLOSURE
FEATURES	MID VISOR · GARMENT WASHING · UNSTRUCTURED FRONT PANEL
SUSTAINABLE FEATURES	SELF FABRIC SWEATBAND · IMPACT REDUCTION: -12% CO <sub>2</sub> eq* 0,703 kg CO <sub>2</sub> eq



Organic  
Certified by ICEA  
GOTS-11099

# Kid Mayo

- Main Fabric: 80% organic cotton - 20% recycled cotton
- Texture: twill



TECH SPECS	KIDS SIZE · 270 GSM
SUSTAINABLE FEATURES	SELF FABRIC SWEATBAND · IMPACT REDUCTION: -20% CO <sub>2</sub> eq* 1,130 kg CO <sub>2</sub> eq

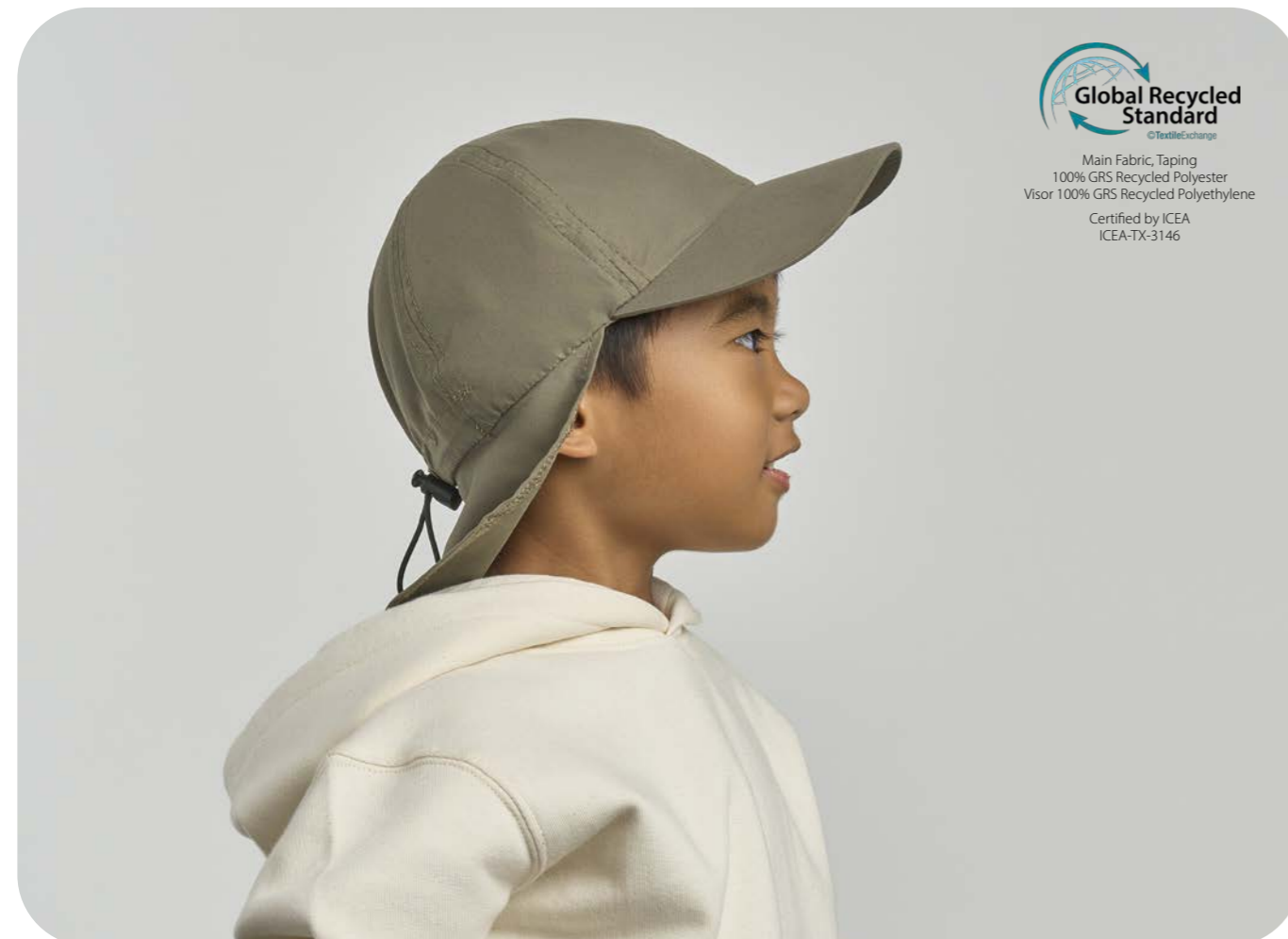


# Kid Nomad-S

- Main Fabric: 100% recycled polyester
- Texture: microfiber



TECH SPECS	KIDS SIZE · 120 GSM · FULLY CLOSED WITH RECYCLED CLAMP
FEATURES	CURVED VISOR · UPF50+ · UNSTRUCTURED FRONT PANEL
SUSTAINABLE FEATURES	RETRAZE® RECYCLED VISOR · SELF FABRIC SWEATBAND IMPACT REDUCTION: -19% CO <sub>2</sub> eq* · 0,403 kg CO <sub>2</sub> eq



**Global Recycled Standard**  
©TextileExchange

Main Fabric, Taping  
100% GRS Recycled Polyester  
Visor 100% GRS Recycled Polyethylene  
Certified by ICEA  
ICEA-TX-3146



**Global Recycled Standard**  
©TextileExchange

Main Fabric, Mesh, Sweatband, Taping  
100% GRS Recycled Polyester  
Visor 100% GRS Recycled Polyethylene  
Certified by ICEA  
ICEA-TX-3146

# Kid Rapper-S

- Main Fabric: 100% recycled polyester
- Side & Back: 100% recycled polyester
- Texture: piqué



TECH SPECS	KIDS SIZE · 180 GSM · RECYCLED SNAPBACK CLOSURE
FEATURES	CURVED VISOR · PADDED FRONT PANEL
SUSTAINABLE FEATURES	R-PET SWEATBAND · RETRAZE® RECYCLED VISOR IMPACT REDUCTION: -17% CO <sub>2</sub> eq* · 0,445 kg CO <sub>2</sub> eq

# Kid Recy Five

- Main Fabric: 100% recycled polyester
- Texture: twill



TECH SPECS	KIDS SIZE · 220 GSM · HOOK & LOOP CLOSURE
FEATURES	CURVED VISOR
SUSTAINABLE FEATURES	IMPACT REDUCTION: -11% CO <sub>2</sub> eq* · 0,398 kg CO <sub>2</sub> eq



# Kid Snap Back-S

- Main Fabric: 100% recycled polyester
- Texture: twill



TECH SPECS	KIDS SIZE · 300 GSM · RECYCLED SNAPBACK CLOSURE
FEATURES	FLAT VISOR
SUSTAINABLE FEATURES	RECYCLED BUCKRAM · R-PET SWEATBAND · RETRAZE® RECYCLED VISOR IMPACT REDUCTION: -22% CO <sub>2</sub> eq* · 0,629 kg CO <sub>2</sub> eq



Main Fabric, Sweatband, Taping, Buckram  
100% GRS Recycled Polyester  
Visor 100% GRS Recycled Polyethylene  
Certified by ICEA  
ICEA-TX-3146

# Kid Star-S

- Main Fabric: 100% organic cotton
- Texture: twill



TECH SPECS	KIDS SIZE · 260 GSM · HOOK & LOOP CLOSURE
FEATURES	CURVED VISOR
SUSTAINABLE FEATURES	RECYCLED BUCKRAM · RETRAZE® RECYCLED VISOR SELF FABRIC SWEATBAND · IMPACT REDUCTION: -14% CO <sub>2</sub> eq* 0,766 kg CO <sub>2</sub> eq



GLOBAL ORGANIC TEXTILE STANDARD  
GOTS · GOTS · GOTS

Organic  
Certified by ICEA  
GOTS-11099



Global Recycled Standard  
©TextileExchange  
100% GRS Recycled Polyester  
Certified by ICEA  
ICEA-TX-3146

OEKO TEX®  
STANDARD 100  
SH020 220679  
TESTEX

# Kid Wind-S

- Main Fabric: 100% recycled polyester



TECH SPECS	KIDS SIZE · 58 G
SUSTAINABLE FEATURES	IMPACT REDUCTION: -21% CO <sub>2</sub> eq* · 0,510 kg CO <sub>2</sub> eq

# Kid Yala

• Main Fabric: 100% organic cotton



TECH SPECS	KIDS SIZE · 50 G
SUSTAINABLE FEATURES	IMPACT REDUCTION: -9% CO <sub>2</sub> eq* · 0,690 kg CO <sub>2</sub> eq



Organic Certified by ICEA GOTS-11099

# Liberty Sandwich-S

• Main Fabric: 80% organic cotton - 20% recycled cotton  
• Texture: twill



TECH SPECS	ONE SIZE · 270 GSM · SNAP BUCKLE WITH SEWN HOLE
FEATURES	CURVED VISOR · SANDWICH ON VISOR · BRUSHED
SUSTAINABLE FEATURES	RECYCLED BUCKRAM · R-PET SWEATBAND · RETRAZE® RECYCLED VISOR IMPACT REDUCTION: -22% CO <sub>2</sub> eq* · 0,759 kg CO <sub>2</sub> eq



Sweatband, Taping, Buckram  
100% GRS Recycled Polyester  
Visor 100% GRS Recycled Polyethylene  
Certified by ICEA  
ICEA-TX-3146

# Maple

• Main Fabric: 100% Polylana® polyester



TECH SPECS	ONE SIZE · 80 G
SUSTAINABLE FEATURES	IMPACT REDUCTION: -56% CO <sub>2</sub> eq* · 0,648 kg CO <sub>2</sub> eq



**Global Recycled Standard**  
 © TextileExchange  
 Sweatband, Buckram  
 100% GRS Recycled Polyester  
 Visor 100% GRS Recycled Polyethylene  
 Certified by ICEA  
 ICEA-TX-3146

# Maui

• Main Fabric: 100% textile-to-textile recycled polyester  
 • Texture: microfiber



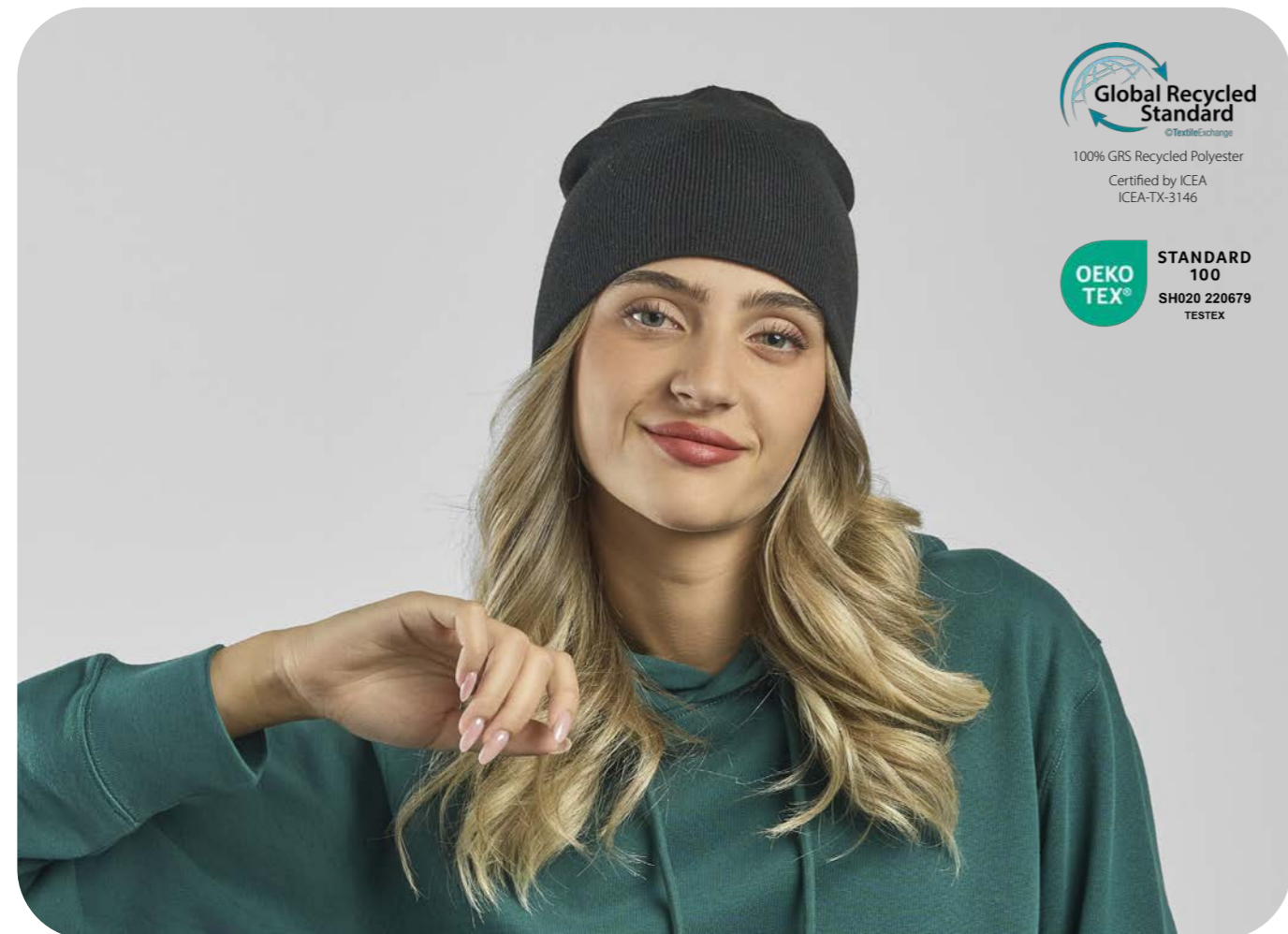
TECH SPECS	ONE SIZE · 105 GSM · HOOK&LOOP WITH PLASTIC LOOP ELASTIC STRING
FEATURES	MID VISOR · MOISTURE-WICKING · LASER HOLES UNSTRUCTURED FRONT PANEL
SUSTAINABLE FEATURES	RETRAZE® RECYCLED VISOR · RECYCLED DRY-TECH SWEATBAND IMPACT REDUCTION: -19% CO <sub>2</sub> eq* · 0,415 kg CO <sub>2</sub> eq

# Moover-S

• Main Fabric: 100% recycled polyester



TECH SPECS	ONE SIZE · 60 G
SUSTAINABLE FEATURES	IMPACT REDUCTION: -30% CO <sub>2</sub> eq* · 0,335 kg CO <sub>2</sub> eq



# Nelson

• Main Fabric: 100% organic cotton



TECH SPECS	ONE SIZE · 78 G
SUSTAINABLE FEATURES	IMPACT REDUCTION: -9% CO <sub>2</sub> eq* · 0,932 kg CO <sub>2</sub> eq



# Nomad-S

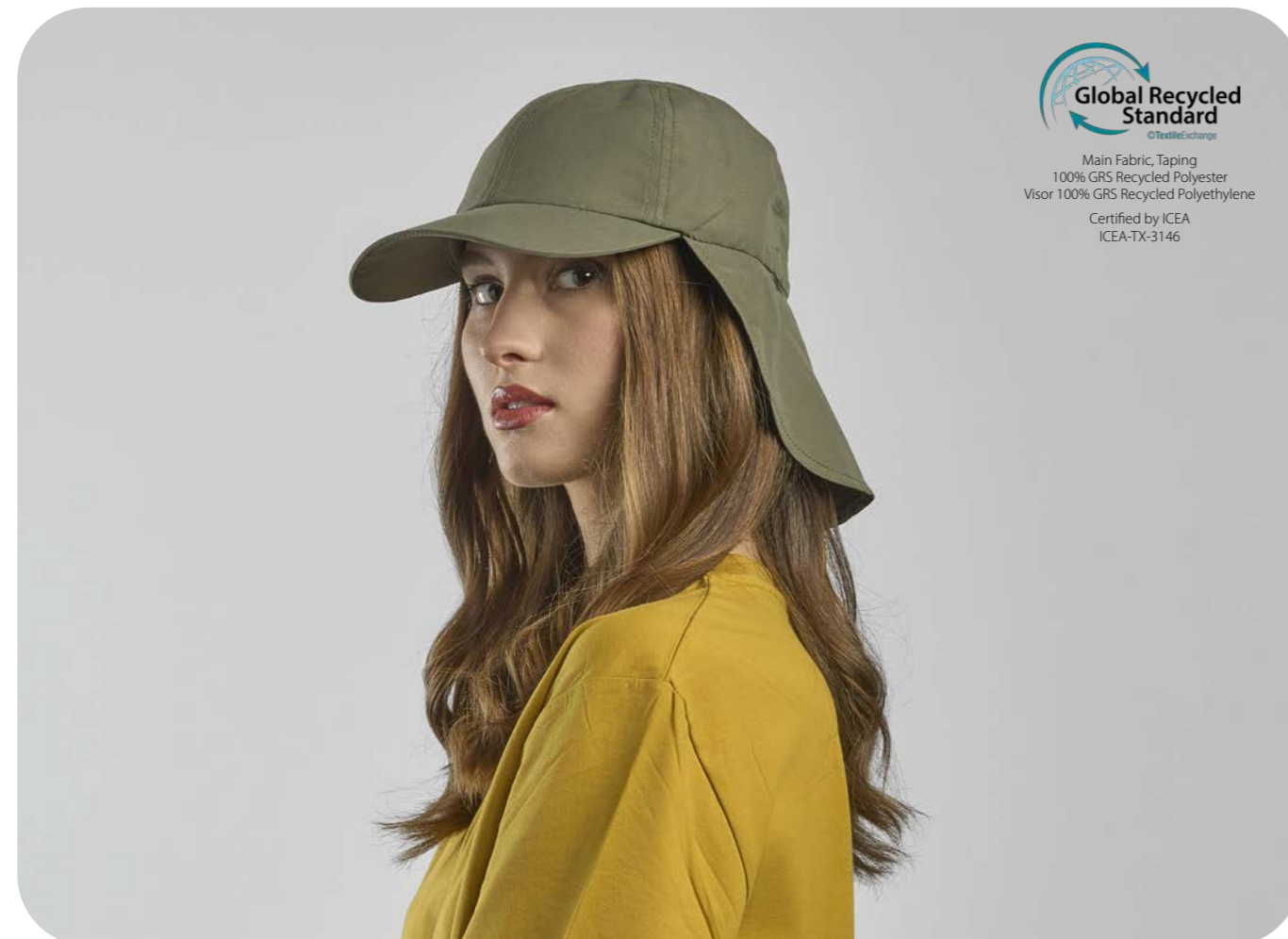
- Main Fabric: 100% recycled polyester
- Texture: microfiber



KHAKI

OLIVE

TECH SPECS	ONE SIZE · 120 GSM · FULLY CLOSED WITH RECYCLED CLAMP
FEATURES	CURVED VISOR · UPF50+ · UNSTRUCTURED FRONT PANEL
SUSTAINABLE FEATURES	RETRAZE® RECYCLED VISOR · SELF FABRIC SWEATBAND IMPACT REDUCTION: -20% CO <sub>2</sub> eq* · 0,459 kg CO <sub>2</sub> eq



Main Fabric, Taping  
100% GRS Recycled Polyester  
Visor 100% GRS Recycled Polyethylene  
Certified by ICEA  
ICEA-TX-3146

POLYLANA®



# Oak

- Main Fabric: 100% Polylana® polyester



TECH SPECS	ONE SIZE · 102 G
SUSTAINABLE FEATURES	IMPACT REDUCTION: -56% CO <sub>2</sub> eq* · 0,804 kg CO <sub>2</sub> eq

# Pico

• Main Fabric: 100% recycled nylon



TECH SPECS	ONE SIZE · 120 GSM · ADJUSTABLE STRING WITH STOPPER
FEATURES	SOFT CROWN · COMPACT DESIGN · WATER RESISTANT - PFC FREE
SUSTAINABLE FEATURES	RECYCLED DRY-TECH SWEATBAND · IMPACT REDUCTION: -47% CO <sub>2</sub> eq* 0,470 kg CO <sub>2</sub> eq



Main Fabric 100% GRS Recycled Nylon  
Sweatband, Taping  
100% GRS Recycled Polyester  
Certified by ICEA  
ICEA-TX-3146

# Pier-S

• Main Fabric: 100% recycled polyester  
• Lining: 100% recycled polyester



TECH SPECS	ONE SIZE · 85 G
SUSTAINABLE FEATURES	FULL LINING IN RECYCLED FLEECE · POLARTEC® IMPACT REDUCTION: -23% CO <sub>2</sub> eq* · 0,699 kg CO <sub>2</sub> eq



100% GRS Recycled Polyester  
Certified by ICEA  
ICEA-TX- 3146

# Pilot-S

- Main Fabric: 80% organic cotton - 20% recycled cotton
- Texture: twill



TECH SPECS	ONE SIZE · 355 GSM · FULL METAL BUCKLE WITH SEWN HOLE
FEATURES	CURVED VISOR · HEAVY BRUSHED
SUSTAINABLE FEATURES	RECYCLED BUCKRAM · R-PET SWEATBAND · RETRAZE® RECYCLED VISOR IMPACT REDUCTION: -22% CO <sub>2</sub> eq* · 0,932 kg CO <sub>2</sub> eq



**Global Recycled Standard**  
©TextileExchange

Sweatband, Taping, Buckram  
100% GRS Recycled Polyester  
Visor 100% GRS Recycled Polyethylene

Certified by ICEA  
ICEA-TX-3146

**Global Recycled Standard**  
©TextileExchange

Sweatband, Taping, Buckram  
100% GRS Recycled Polyester  
Visor 100% GRS Recycled Polyethylene

Certified by ICEA  
ICEA-TX-3146

# Pilot Piping Sandwich-S

- Main Fabric: 80% organic cotton - 20% recycled cotton
- Texture: twill



TECH SPECS	ONE SIZE · 355 GSM · FULL METAL BUCKLE WITH METAL HOLE
FEATURES	CURVED VISOR · PIPING ON VISOR AND ON BACK · HEAVY BRUSHED CONTRAST COLOR UNDERBILL
SUSTAINABLE FEATURES	RECYCLED BUCKRAM · R-PET SWEATBAND · RETRAZE® RECYCLED VISOR IMPACT REDUCTION: -20% CO <sub>2</sub> eq* · 0,938 kg CO <sub>2</sub> eq

# Pitch

- Main Fabric: 100% recycled polyester
- Texture: microtwill



DARK GREY      BLACK      NAVY

TECH SPECS	S/M - L/XL · 200 GSM · FULLY CLOSED ON BACK
FEATURES	MID VISOR · STRETCHABLE FABRIC
SUSTAINABLE FEATURES	RETRAZE® RECYCLED VISOR · RECYCLED BUCKRAM RECYCLED ELASTIC SWEATBAND · IMPACT REDUCTION: -22% CO <sub>2</sub> eq* 0,507 kg CO <sub>2</sub> eq



Main Fabric, Taping, Buckram  
100% GRS Recycled Polyester  
Sweatband 91% GRS Recycled Polyester  
Visor 100% GRS Recycled Polyethylene  
Certified by ICEA  
ICEA-TX- 3146

# Powell

- Main Fabric: 50% recycled cotton - 50% virgin cotton
- Texture: twill



WHITE      DARK GREY      KHAKE  
BLACK      NAVY      OLIVE

TECH SPECS	ONE SIZE · 260 GSM
SUSTAINABLE FEATURES	SELF FABRIC SWEATBAND · IMPACT REDUCTION: -18% CO <sub>2</sub> eq* 0,842 kg CO <sub>2</sub> eq



50% GRS Recycled Cotton  
Certified by ICEA  
ICEA-TX-3146

# Pure

• Main Fabric: 100% Polylana® polyester



TECH SPECS	ONE SIZE · 90 G
SUSTAINABLE FEATURES	IMPACT REDUCTION: -55% CO <sub>2</sub> eq* · 0,731 kg CO <sub>2</sub> eq



©TextileExchange  
Main Fabric, Lining, Sweatband, Taping  
100% GRS Recycled Polyester  
Visor 100% GRS Recycled Polyethylene  
Certified by ICEA  
ICEA-TX-3146



# Rainy-S

- Main Fabric: 100% recycled polyester
- Lining: 100% recycled polyester
- Texture: ripstop



TECH SPECS	ONE SIZE · 85 GSM · SUNDAY BUCKLE
FEATURES	CURVED VISOR · HOT SEALED TAPING · WATER RESISTANT - PFC FREE UNSTRUCTURED FRONT PANEL
SUSTAINABLE FEATURES	RETRAZE® RECYCLED VISOR · R-PET MESH LINING RECYCLED DRY-TECH SWEATBAND IMPACT REDUCTION: -20% CO <sub>2</sub> eq* 0,445 kg CO <sub>2</sub> eq

# Rapper-S

- Front & Bill: 100% recycled polyester
- Side & Back: 100% recycled polyester
- Texture: piqué



TECH SPECS	ONE SIZE · 180 GSM · RECYCLED SNAPBACK CLOSURE
FEATURES	MID VISOR · PADDED FRONT PANEL
SUSTAINABLE FEATURES	R-PET SWEATBAND · RETRAZE® RECYCLED VISOR IMPACT REDUCTION: -18% CO <sub>2</sub> eq* · 0,471 kg CO <sub>2</sub> eq



Main Fabric, Mesh, Sweatband, Taping  
100% GRS Recycled Polyester  
Visor 100% GRS Recycled Polyethylene  
Certified by ICEA  
ICEA-TX- 3146

# Rapper Canvas-S

- Main Fabric: 100% recycled polyester
- Side&back: 100% recycled polyester
- Texture: canvas



TECH SPECS	ONE SIZE · 270 GSM · RECYCLED SNAPBACK CLOSURE
FEATURES	MID VISOR
SUSTAINABLE FEATURES	RECYCLED BUCKRAM · RETRAZE® RECYCLED VISOR SELF FABRIC SWEATBAND · IMPACT REDUCTION: -21% CO <sub>2</sub> eq* 0,558 kg CO <sub>2</sub> eq



Main Fabric, Mesh, Taping, Buckram  
100% GRS Recycled Polyester  
Visor 100% GRS Recycled Polyethylene  
Certified by ICEA  
ICEA-TX-3146

# Rapper Cotton-S

- Main Fabric: 80% organic cotton - 20% recycled cotton
- Side & Back: 100% recycled polyester
- Texture: twill



TECH SPECS	ONE SIZE · 270 GSM · RECYCLED SNAPBACK CLOSURE
FEATURES	CURVED VISOR
SUSTAINABLE FEATURES	RECYCLED BUCKRAM · RECYCLED POLYESTER SWEATBAND · RETRAZE® RECYCLED VISOR · IMPACT REDUCTION: -22% CO <sub>2</sub> eq* · 0,615 kg CO <sub>2</sub> eq



# Rapper Suede-S

- Main Fabric: 81% recycled polyester - 19% polyester
- Side & Back: 100% recycled polyester
- Underbill: 100% recycled polyester
- Texture: suede



TECH SPECS	ONE SIZE · 135 GSM · RECYCLED SNAPBACK CLOSURE
FEATURES	MID VISOR
SUSTAINABLE FEATURES	RECYCLED BUCKRAM · R-PET SWEATBAND · RETRAZE® RECYCLED VISOR · IMPACT REDUCTION: -20% CO <sub>2</sub> eq* · 0,486 kg CO <sub>2</sub> eq

# Ray-S

- Main Fabric: 100% recycled polyester
- Texture: microtwill



TECH SPECS	ONE SIZE · 106 GSM · RECYCLED RUBBER HOOK & LOOP CLOSURE
FEATURES	MID VISOR · UPF50+ · WATER RESISTANT - PFC FREE
SUSTAINABLE FEATURES	RECYCLED BUCKRAM · RETRAZE® RECYCLED VISOR RECYCLED DRY-TECH SWEATBAND · IMPACT REDUCTION: -20% CO <sub>2</sub> eq* 0,534 kg CO <sub>2</sub> eq



Main Fabric, Sweatband, Taping, Buckram  
100% GRS Recycled Polyester  
Visor 100% GRS Recycled Polyethylene  
Certified by ICEA  
ICEA-TX-3146

# Record-S

- Front & Bill: 100% recycled polyester
- Side & Back: 100% recycled polyester
- Texture: twill



TECH SPECS	ONE SIZE · 200 GSM · RECYCLED SNAPBACK CLOSURE
FEATURES	MID VISOR · PADDED FRONT PANEL
SUSTAINABLE FEATURES	RETRAZE® RECYCLED VISOR · SELF FABRIC SWEATBAND IMPACT REDUCTION: -19% CO <sub>2</sub> eq* · 0,542 kg CO <sub>2</sub> eq



Main Fabric, Mesh, Sweatband, Taping  
100% GRS Recycled Polyester  
Visor 100% GRS Recycled Polyethylene  
Certified by ICEA  
ICEA-TX-3146

# Recy Beanie

• Main Fabric: 50% recycled polyester - 50% acrylic



TECH SPECS	ONE SIZE · 48 G
SUSTAINABLE FEATURES	IMPACT REDUCTION: -26% CO <sub>2</sub> eq* · 0,674 kg CO <sub>2</sub> eq



©TextileExchange  
Main Fabric, Sweatband, Taping, Buckram  
100% GRS Recycled Polyester  
Visor 100% GRS Recycled Polyethylene  
Certified by ICEA  
ICEA-TX-3146



# Recy Feel

• Main Fabric: 100% recycled polyester  
• Texture: microfiber



TECH SPECS	ONE SIZE · 115 GSM · RECYCLED SNAPBACK CLOSURE
FEATURES	MID VISOR
SUSTAINABLE FEATURES	RECYCLED DRY-TECH SWEATBAND · RETRAZE® RECYCLED VISOR IMPACT REDUCTION: -20% CO <sub>2</sub> eq* · 0,457 kg CO <sub>2</sub> eq

# Recy Five

- Main Fabric: 100% recycled polyester
- Texture: twill



TECH SPECS	ONE SIZE · 220 GSM · HOOK & LOOP CLOSURE
FEATURES	CURVED VISOR
SUSTAINABLE FEATURES	IMPACT REDUCTION: -12% CO <sub>2</sub> eq* · 0,479 kg CO <sub>2</sub> eq



# Recy Five Italia

- Main Fabric: 100% recycled polyester
- Texture: twill



TECH SPECS	ONE SIZE · 220 GSM · HOOK & LOOP CLOSURE
FEATURES	CURVED VISOR · HALF PIPING ON VISOR
SUSTAINABLE FEATURES	IMPACT REDUCTION: -12% CO <sub>2</sub> eq* · 0,479 kg CO <sub>2</sub> eq



# Recy Five Piping

- Main Fabric: 100% recycled polyester
- Construction: twill



TECH SPECS	ONE SIZE · 220 GSM · HOOK & LOOP CLOSURE
FEATURES	CURVED VISOR · PIPING ON VISOR
SUSTAINABLE FEATURES	IMPACT REDUCTION: -12% CO <sub>2</sub> eq* · 0,465 kg CO <sub>2</sub> eq



# Recy Six

- Main Fabric: 100% recycled polyester
- Construction: twill



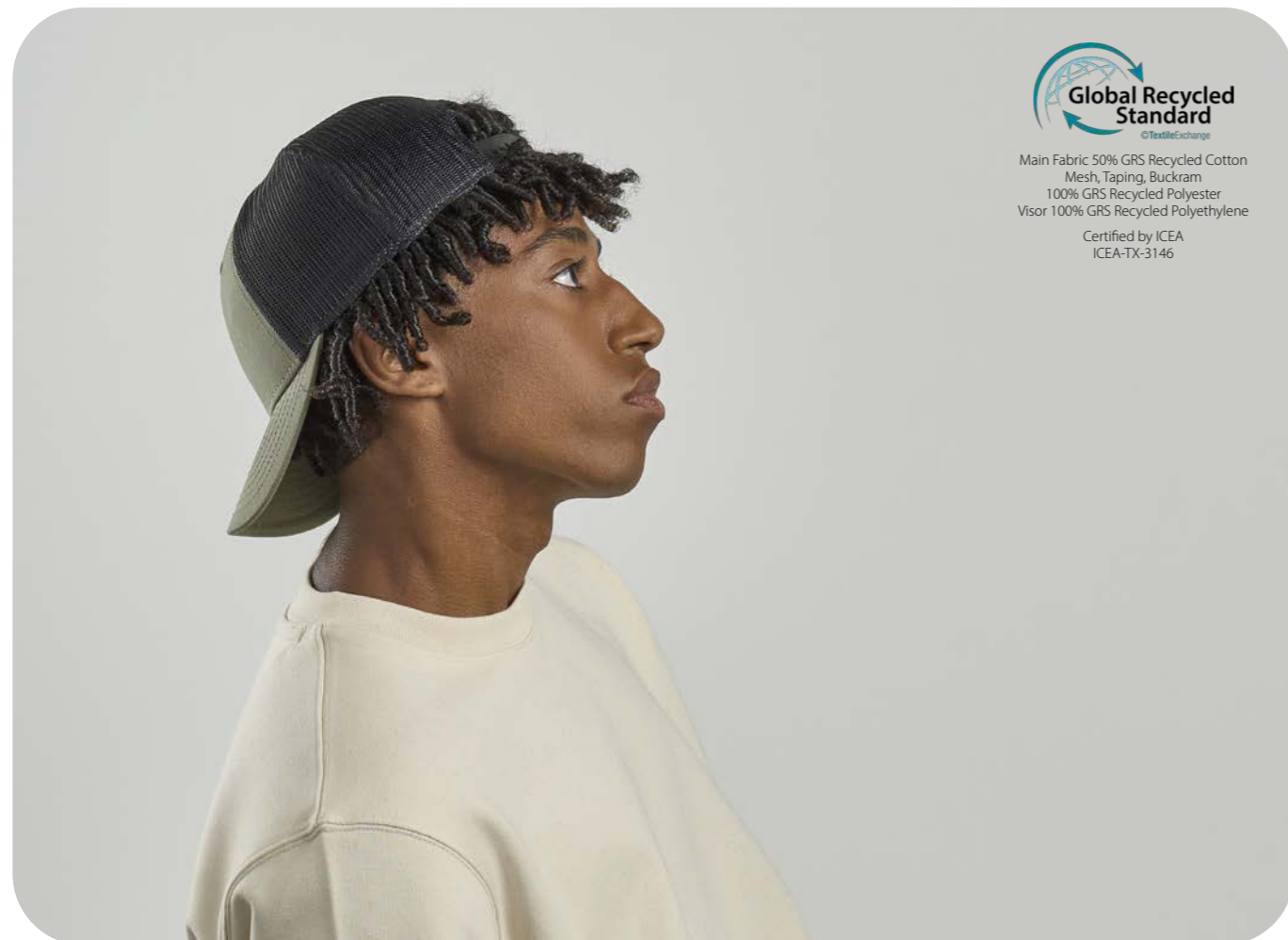
TECH SPECS	ONE SIZE · 220 GSM · HOOK & LOOP CLOSURE
FEATURES	CURVED VISOR
SUSTAINABLE FEATURES	IMPACT REDUCTION: -12% CO <sub>2</sub> eq* · 0,477 kg CO <sub>2</sub> eq

# Recy Three

- Main Fabric: 50% recycled cotton - 50% virgin cotton
- Texture: canvas



TECH SPECS	ONE SIZE · 260 GSM · RECYCLED SNAPBACK CLOSURE
FEATURES	MID VISOR
SUSTAINABLE FEATURES	RECYCLED BUCKRAM · RETRAZE® RECYCLED VISOR SELF FABRIC SWEATBAND · IMPACT REDUCTION: -20% CO <sub>2</sub> eq* 0,617 kg CO <sub>2</sub> eq



Main Fabric 50% GRS Recycled Cotton  
Mesh, Taping, Buckram  
100% GRS Recycled Polyester  
Visor 100% GRS Recycled Polyethylene  
Certified by ICEA  
ICEA-TX-3146

# Reflect-S

- Main Fabric: 100% recycled polyester
- Texture: twill



TECH SPECS	ONE SIZE · 200 GSM · SNAP BUCKLE WITH SEWN HOLE
FEATURES	CURVED VISOR · WATER RESISTANT - PFC FREE · REFLECTIVE PIPING
SUSTAINABLE FEATURES	RETRAZE® RECYCLED VISOR · RECYCLED BUCKRAM SELF FABRIC SWEATBAND · IMPACT REDUCTION: -21% CO <sub>2</sub> eq* 0,566 kg CO <sub>2</sub> eq



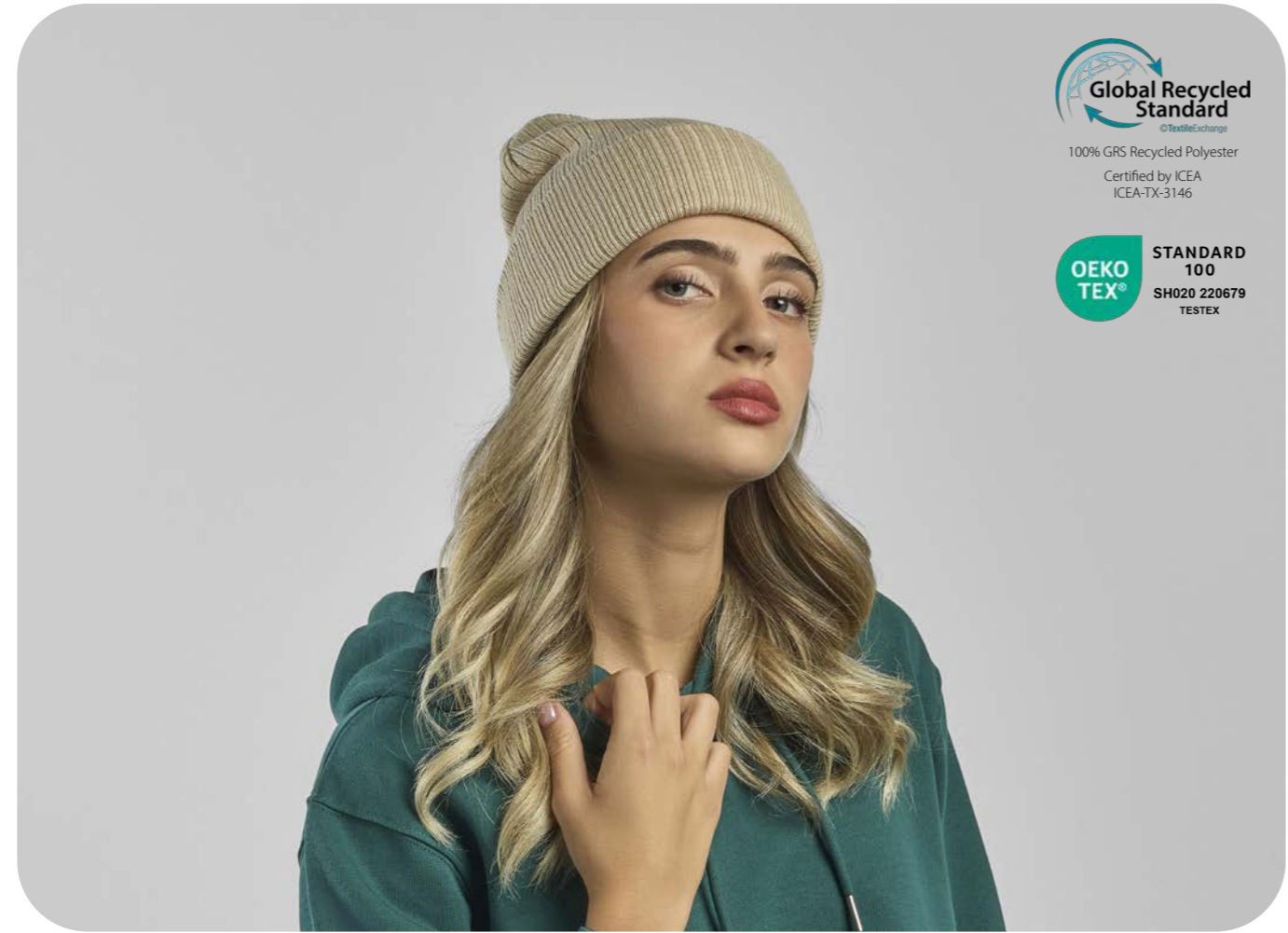
Main Fabric, Taping, Buckram  
100% GRS Recycled Polyester  
Visor 100% GRS Recycled Polyethylene  
Certified by ICEA  
ICEA-TX-3146

# Rio

• Main Fabric: 100% recycled polyester



TECH SPECS	ONE SIZE · 63 G
SUSTAINABLE FEATURES	IMPACT REDUCTION: -22% CO <sub>2</sub> eq* · 0,552 kg CO <sub>2</sub> eq



**Global Recycled Standard**  
©TextileExchange  
100% GRS Recycled Polyester  
Certified by ICEA  
ICEA-TX-3146

**OEKO TEX®**  
STANDARD 100  
SH020 220679  
TESTEX



**Global Recycled Standard**  
©TextileExchange  
Main Fabric 97% GRS Recycled Polyester  
Sweatband 91% GRS Recycled Polyester  
Taping, Buckram 100% GRS Recycled Polyester  
Visor 100% GRS Recycled Polyethylene  
Certified by ICEA  
ICEA-TX-3146

# Sand

• Main Fabric: 97% recycled polyester - 3% elastane  
• Texture: miniottoman



TECH SPECS	ONE SIZE · 290 GSM · HOOK&LOOP CLOSURE PLASTIC LOOP ELASTIC STRING
FEATURES	MID VISOR
SUSTAINABLE FEATURES	RETRAZE® RECYCLED VISOR · RECYCLED BUCKRAM RECYCLED ELASTIC SWEATBAND · IMPACT REDUCTION: -20% CO <sub>2</sub> eq* 0,649 kg CO <sub>2</sub> eq

# Shine

• Main Fabric: 100% recycled polyester



TECH SPECS	ONE SIZE · 76 G
FEATURES	REFLECTIVE YARN
SUSTAINABLE FEATURES	IMPACT REDUCTION: -22% CO <sub>2</sub> eq* · 0,637 kg CO <sub>2</sub> eq



# Shore

• Main Fabric: 100% recycled polyester



TECH SPECS	ONE SIZE · 80 G
SUSTAINABLE FEATURES	IMPACT REDUCTION: -22% CO <sub>2</sub> eq* · 0,625 kg CO <sub>2</sub> eq





Taping, Buckram,  
100% GRS Recycled Polyester  
Visor 100% GRS Recycled Polyethylene  
Certified by ICEA  
ICEA-TX-3146



# Skye

- Main Fabric: 93% recycled polyester - 7% polyester
- Texture: honeycomb



TECH SPECS

ONE SIZE · 255 GSM · HIGH QUALITY HOOK & LOOP CLOSURE

FEATURES

MID VISOR

SUSTAINABLE FEATURES

RETRAZE® RECYCLED VISOR · DOPE DYEING  
RECYCLED DRY-TECH SWEATBAND · RECYCLED BUCKRAM  
IMPACT REDUCTION: -21% CO<sub>2</sub>eq\* · 0,598 kg CO<sub>2</sub> eq

# Shot-S

- Main Fabric: 80% organic cotton - 20% recycled cotton
- Texture: twill



Main Fabric 93% GRS Recycled Polyester  
Sweatband, Taping, Buckram  
100% GRS Recycled Polyester  
Visor 100% GRS Recycled Polyethylene  
Certified by ICEA  
ICEA-TX-3146



TECH SPECS

ONE SIZE · 270 GSM · SUNDAY BUCKLE CLOSURE

FEATURES

CURVED VISOR

SUSTAINABLE FEATURES

RECYCLED BUCKRAM · SELF FABRIC SWEATBAND  
RETRAZE® RECYCLED VISOR · IMPACT REDUCTION: -20% CO<sub>2</sub>eq\*  
0,962 kg CO<sub>2</sub> eq

# Snap Back-S

- Main Fabric: 100% recycled polyester
- Texture: twill



TECH SPECS	ONE SIZE · 300 GSM · RECYCLED SNAPBACK CLOSURE
FEATURES	FLAT VISOR
SUSTAINABLE FEATURES	RECYCLED BUCKRAM · R-PET SWEATBAND · RETRAZE® RECYCLED VISOR IMPACT REDUCTION: -21% CO <sub>2</sub> eq* · 0,651 kg CO <sub>2</sub> eq

# Snap Five-S

- Main Fabric: 100% recycled polyester
- Texture: twill



TECH SPECS	ONE SIZE · 300 GSM · RECYCLED SNAPBACK CLOSURE
FEATURES	FLAT VISOR
SUSTAINABLE FEATURES	RECYCLED BUCKRAM · R-PET SWEATBAND · RETRAZE® RECYCLED VISOR IMPACT REDUCTION: -22% CO <sub>2</sub> eq* · 0,656 kg CO <sub>2</sub> eq



**Global Recycled Standard**  
©TextileExchange

Main Fabric, Sweatband, Taping, Buckram  
100% GRS Recycled Polyester  
Visor 100% GRS Recycled Polyethylene

Certified by ICEA  
ICEA-TX-3146



**Global Recycled Standard**  
©TextileExchange

Main Fabric, Sweatband, Taping, Buckram  
100% GRS Recycled Polyester  
Visor 100% GRS Recycled Polyethylene

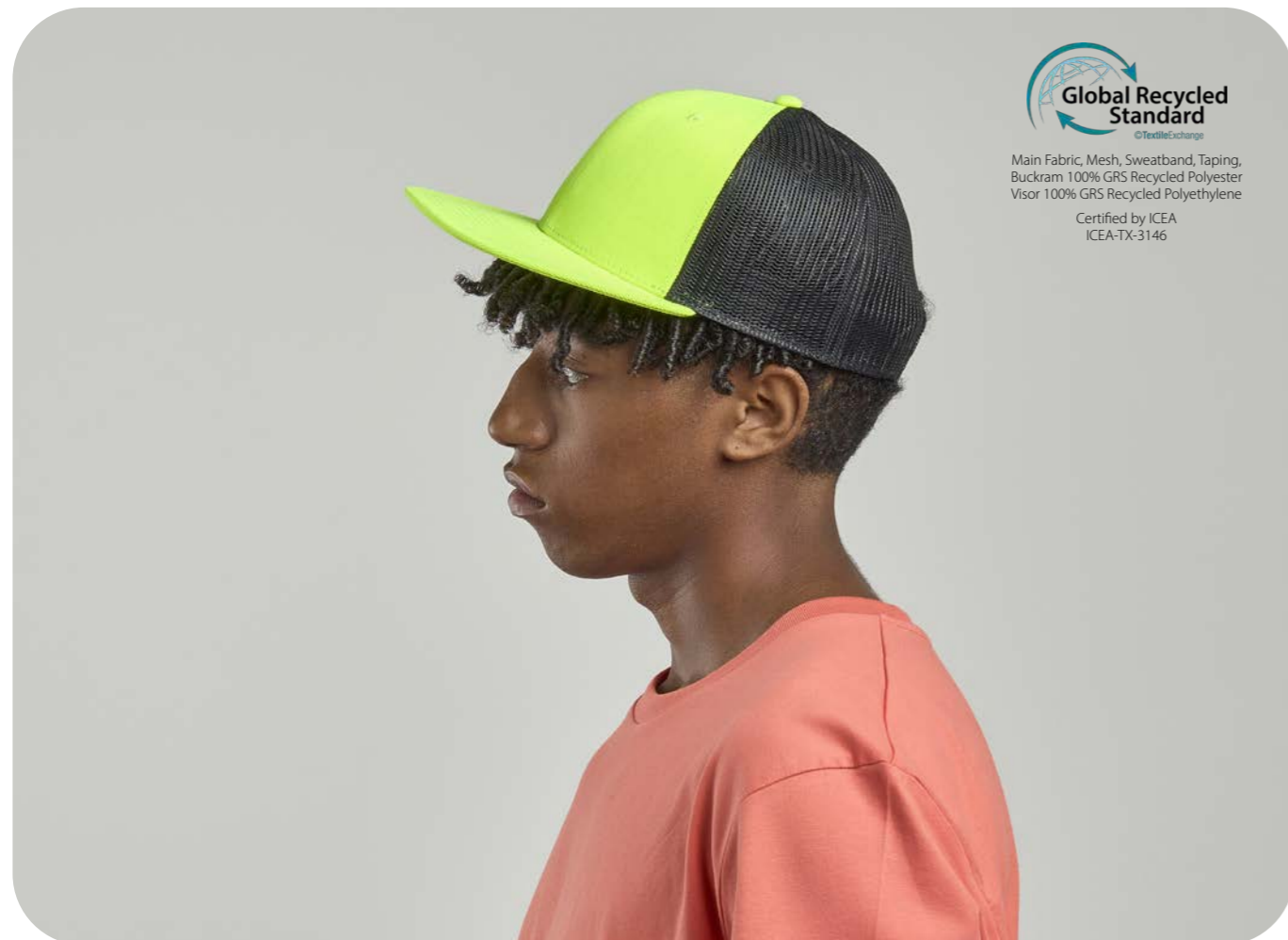
Certified by ICEA  
ICEA-TX-3146

# Snap Mesh-S

- Main Fabric: 100% recycled polyester
- Side & back: 100% recycled polyester
- Texture: twill



TECH SPECS	ONE SIZE · 300 GSM · RECYCLED SNAPBACK CLOSURE
FEATURES	FLAT VISOR
SUSTAINABLE FEATURES	RECYCLED BUCKRAM · R-PET SWEATBAND · RETRAZE® RECYCLED VISOR IMPACT REDUCTION: -21% CO <sub>2</sub> eq* · 0,588 kg CO <sub>2</sub> eq



**Global Recycled Standard**  
©TextileExchange

Main Fabric, Mesh, Sweatband, Taping, Buckram 100% GRS Recycled Polyester  
Visor 100% GRS Recycled Polyethylene

Certified by ICEA  
ICEA-TX-3146



**Global Recycled Standard**  
©TextileExchange

Main Fabric, Sweatband, Taping  
100% GRS Recycled Polyester  
Visor 100% GRS Recycled Polyethylene

Certified by ICEA  
ICEA-TX-3146

# Snow Flap Stopper-S

- Main Fabric: 100% recycled polyester



TECH SPECS	ONE SIZE · 230 GSM · FULLY CLOSED WITH RECYCLED STOPPER
FEATURES	CURVED VISOR · UNSTRUCTURED FRONT PANEL
SUSTAINABLE FEATURES	R-PET SWEATBAND · RETRAZE® RECYCLED VISOR IMPACT REDUCTION: -22% CO <sub>2</sub> eq* · 0,819 kg CO <sub>2</sub> eq

# Sonic-S

- Main Fabric: 80% organic cotton - 20% recycled cotton
- Side & Back: 100% recycled polyester
- Texture: twill



TECH SPECS	ONE SIZE · 270 GSM · RECYCLED SNAPBACK CLOSURE
FEATURES	MID VISOR
SUSTAINABLE FEATURES	RECYCLED BUCKRAM · RETRAZE® RECYCLED VISOR SELF FABRIC SWEATBAND · IMPACT REDUCTION: -22% CO <sub>2</sub> eq* 0,751 kg CO <sub>2</sub> eq



# Sport Sandwich-S

- Main Fabric: 80% organic cotton - 20% recycled cotton
- Texture: twill



TECH SPECS	ONE SIZE · 200 GSM · SNAP BUCKLE WITH SEWN HOLE
FEATURES	CURVED VISOR · SANDWICH ON VISOR · LIGHT BRUSHED
SUSTAINABLE FEATURES	RECYCLED BUCKRAM · R-PET SWEATBAND · RETRAZE® RECYCLED VISOR IMPACT REDUCTION: -21% CO <sub>2</sub> eq* · 0,680 kg CO <sub>2</sub> eq



# Swing-S

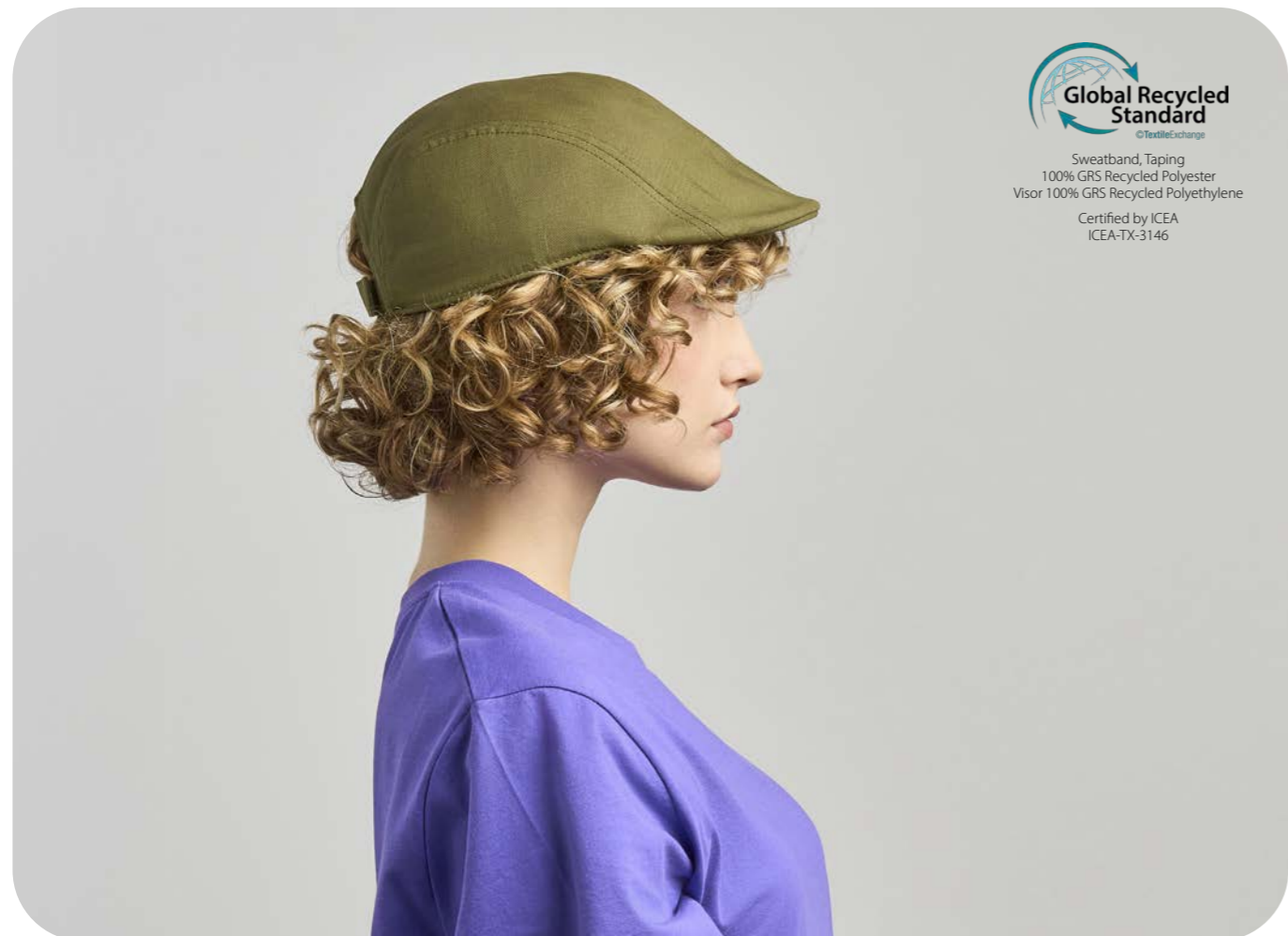
- Main Fabric: 80% organic cotton - 20% recycled cotton
- Texture: twill



DARK GREY      KHAKI      BLACK      NAVY      OLIVE

TECH SPECS	ONE SIZE · 280 GSM · HOOK & LOOP CLOSURE
FEATURES	MID VISOR · LIGHT BRUSHED
SUSTAINABLE FEATURES	RETRAZE® RECYCLED VISOR · R-PET SWEATBAND IMPACT REDUCTION: -21% CO <sub>2</sub> eq* · 0,665 kg CO <sub>2</sub> eq

**Global Recycled Standard**  
© TextileExchange  
Sweatband, Taping  
100% GRS Recycled Polyester  
Visor 100% GRS Recycled Polyethylene  
Certified by ICEA  
ICEA-TX-3146



**Global Recycled Standard**  
© TextileExchange  
Sweatband, Taping  
100% GRS Recycled Polyester  
Visor 100% GRS Recycled Polyethylene  
Certified by ICEA  
ICEA-TX-3146

# Tank-S

- Main Fabric: 80% organic cotton - 20% recycled cotton
- Texture: twill



DARK GREY      KHAKI      BLACK      NAVY      OLIVE

TECH SPECS	ONE SIZE · 280 GSM · HOOK & LOOP CLOSURE
FEATURES	CURVED VISOR · LIGHT BRUSHED
SUSTAINABLE FEATURES	RETRAZE® RECYCLED VISOR · R-PET SWEATBAND IMPACT REDUCTION: -21% CO <sub>2</sub> eq* · 0,810 kg CO <sub>2</sub> eq

# Techno Flap-S

- Main Fabric: 100% recycled nylon
- Lining: 100% recycled polyester



DARK GREY      BLACK      NAVY      RED

TECH SPECS	ONE SIZE · 120 GSM · FULLY CLOSED WITH RECYCLED STOPPER
FEATURES	CURVED VISOR · METAL EYELETS · WATER RESISTANT - PFC FREE UNSTRUCTURED FRONT PANEL
SUSTAINABLE FEATURES	RETRAZE® RECYCLED VISOR · FULL R-PET FLEECE LINING IMPACT REDUCTION: -34% CO <sub>2</sub> eq* · 0,613 kg CO <sub>2</sub> eq



Main Fabric 100% GRS Recycled Nylon  
Lining, Taping 100% GRS Recycled Polyester  
Visor 100% GRS Recycled Polyethylene  
Certified by ICEA  
ICEA-TX-3146

# Uniform-S

- Main Fabric: 80% organic cotton - 20% recycled cotton
- Texture: twill



KHAKI      BLACK      NAVY      OLIVE

TECH SPECS	ONE SIZE · 280 GSM · HOOK & LOOP CLOSURE
FEATURES	CURVED VISOR · GARMENT WASHING
SUSTAINABLE FEATURES	SELF FABRIC SWEATBAND · RECYCLED VISOR IMPACT REDUCTION: -21% CO <sub>2</sub> eq* · 0,925 kg CO <sub>2</sub> eq



Taping  
100% GRS Recycled Polyester  
Certified by ICEA  
ICEA-TX-3146

# Wind-S

• Main Fabric: 100% recycled polyester



TECH SPECS	ONE SIZE · 70 G
SUSTAINABLE FEATURES	IMPACT REDUCTION: -22% CO <sub>2</sub> eq* · 0,588 kg CO <sub>2</sub> eq



# Wind-S with Patch

• Main Fabric: 100% recycled polyester



TECH SPECS	ONE SIZE · 74 G
FEATURES	BLANK PATCH
SUSTAINABLE FEATURES	IMPACT REDUCTION: -23% CO <sub>2</sub> eq* · 0,684 kg CO <sub>2</sub> eq

# Wind-S with pompom

• Main Fabric: 100% recycled polyester



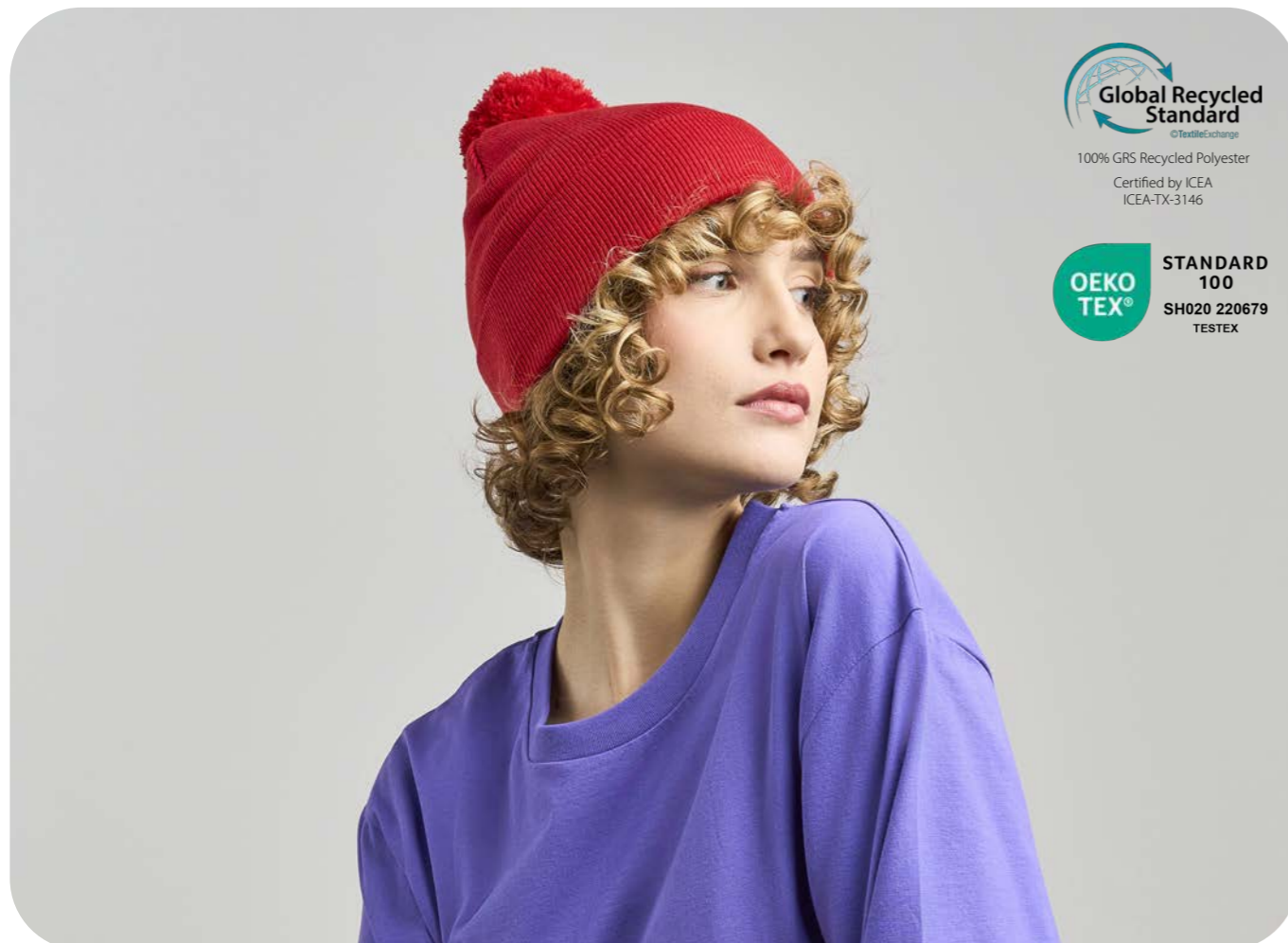
TECH SPECS	ONE SIZE · 85 G
SUSTAINABLE FEATURES	IMPACT REDUCTION: -29% CO <sub>2</sub> eq* · 0,696 kg CO <sub>2</sub> eq

# Wind Scarf-S

• Main Fabric: 100% recycled polyester



TECH SPECS	160x25CM · 146 G
SUSTAINABLE FEATURES	IMPACT REDUCTION: -23% CO <sub>2</sub> eq* · 1,100 kg CO <sub>2</sub> eq



# Winner-S

- Main Fabric: 100% recycled polyester
- Texture: twill



BLACK

NAVY

TECH SPECS	ONE SIZE · 300 GSM · FULL METAL BUCKLE WITH SEWN HOLE
FEATURES	CURVED VISOR · LAUREL ON VISOR
SUSTAINABLE FEATURES	RECYCLED BUCKRAM · RETRAZE® RECYCLED VISOR · R-PET SWEATBAND IMPACT REDUCTION: -21% CO <sub>2</sub> eq* · 0,671 kg CO <sub>2</sub> eq



Main Fabric, Sweatband, Taping, Buckram  
100% GRS Recycled Polyester  
Visor 100% GRS Recycled Polyethylene  
Certified by ICEA  
ICEA-TX-3146



# Workout-S

- Main Fabric: 100% recycled polyester



ORANGE FLUO

YELLOW FLUO

BLACK

TECH SPECS	ONE SIZE · 74 G
FEATURES	REFLECTIVE YARN
SUSTAINABLE FEATURES	IMPACT REDUCTION: -22% CO <sub>2</sub> eq* · 0,629 kg CO <sub>2</sub> eq

# Yala

• Main Fabric: 100% organic cotton



TECH SPECS	ONE SIZE · 60 G
SUSTAINABLE FEATURES	IMPACT REDUCTION: -9% CO <sub>2</sub> eq* · 0,735 kg CO <sub>2</sub> eq



Organic  
Certified by ICEA  
GOTS-11099

# Yukon

• Main Fabric: 100% recycled polyester  
• Texture: microtwill



TECH SPECS	ONE SIZE · 200 GSM · RECYCLED SNAPBACK CLOSURE
FEATURES	MID VISOR
SUSTAINABLE FEATURES	RECYCLED BUCKRAM · R-PET SWEATBAND · RETRAZE® RECYCLED VISOR IMPACT REDUCTION: -20% CO <sub>2</sub> eq* · 0,549 kg CO <sub>2</sub> eq



Main Fabric 97% GRS Recycled Polyester  
Sweatband, Buckram  
100% GRS Recycled Polyester  
Visor 100% GRS Recycled Polyethylene  
Certified by ICEA  
ICEA-TX-3146

# Zion

- Main Fabric: 100% recycled polyester
- Side & Back: 100% recycled polyester
- Texture: twill



TECH SPECS	ONE SIZE · 200 GSM · RECYCLED SNAPBACK CLOSURE
FEATURES	CURVED VISOR
SUSTAINABLE FEATURES	RECYCLED BUCKRAM · RETRAZE® RECYCLED VISOR SELF FABRIC SWEATBAND · IMPACT REDUCTION: -22% CO <sub>2</sub> eq* 0,507 kg CO <sub>2</sub> eq





# Action

• Main Fabric: 100% cotton



TECH SPECS	ONE SIZE · 280 GSM · SUNDAY BUCKLE
FEATURES	CURVED VISOR · GARMENT WASHING · METAL EYELETS
SUSTAINABLE FEATURES	RETRAZE® RECYCLED VISOR



# Bandana Goal

• Main Fabric: 100% cotton



TECH SPECS	52x52 · 110 GSM
------------	-----------------

# Beat

• Main Fabric: 100% polyester  
• Underbill: 100% cotton



TECH SPECS	ONE SIZE · 300 GSM · SNAPBACK CLOSURE
FEATURES	MID VISOR · COTTON SWEATBAND · STRUCTURED FRONT PANEL
SUSTAINABLE FEATURES	RETRAZE® RECYCLED VISOR

# Bolt

• Main Fabric: 100% polyester



TECH SPECS	ONE SIZE · 170 GSM · HIGH QUALITY HOOK & LOOP CLOSURE
FEATURES	CURVED VISOR · STRETCHABLE FABRIC · DRY-TECH SWEATBAND
SUSTAINABLE FEATURES	RETRAZE® RECYCLED VISOR

# Cargo

• Main Fabric: 100% cotton



TECH SPECS	ONE SIZE · 280 GSM · SUNDAY BUCKLE CLOSURE
FEATURES	CURVED VISOR · GARMENT WASHING · STRUCTURED FRONT PANEL

# Bucket Cotton

• Main Fabric: 100% cotton



TECH SPECS	ONE SIZE · 180 GSM
FEATURES	SOFT CROWN
SUSTAINABLE FEATURES	SELF FABRIC SWEATBAND

# Case

• Main Fabric: 100% cotton  
• Side & back: 100% polyester



TECH SPECS	ONE SIZE · 250 GSM · HOOK & LOOP CLOSURE
FEATURES	MID VISOR · PIGMENT DYED FABRIC · UNSTRUCTURED FRONT PANEL

# Dad Hat

• Main Fabric: 100% chino cotton



---

TECH SPECS      ONE SIZE · 280 GSM · FULL METAL BUCKLE WITH METAL HOLE  
FEATURES      MID VISOR · UNSTRUCTURED FRONT PANEL · GARMENT WASHING

---



# Digg

• Main Fabric: 100% cotton



---

TECH SPECS      ONE SIZE · 250 GSM · FULL METAL BUCKLE WITH METAL HOLE  
FEATURES      MID VISOR · PIGMENT DYED FABRIC · UNSTRUCTURED FRONT PANEL

---

# Docker

• Main Fabric: 80% acrylic - 20% polyester



---

TECH SPECS      ONE SIZE · 80 G

---

# Eko Beanie

• Main Fabric: 100% acrylic



TECH SPECS

ONE SIZE · 80 G

# Flash

• Main Fabric: 95% cotton - 5% elastane



TECH SPECS

ONE SIZE · 200 GSM

FEATURES

STRETCHABLE FABRIC

# Estoril

• Main Fabric: 100% polyester



TECH SPECS

ONE SIZE · 150 GSM · HIGH QUALITY HOOK&LOOP WITH PLASTIC BUCKLE

FEATURES

CURVED VISOR · HALF PIPING ON VISOR · STRUCTURED FRONT PANEL

# Forever

• Main Fabric: 100% cotton



TECH SPECS

S/M - L/XL · 280 GSM

FEATURES

GARMENT WASHING

# Freedom Basic

• Main Fabric: 100% polyester



BLACK

RED

TECH SPECS

49x25 · 130 GSM

# Gear

• Main Fabric: 100% cotton  
• Front&bill: 98% polyester - 2% elastane



WHITE

BLACK



RED

NAVY

TECH SPECS

ONE SIZE · 280 GSM · HOOK & LOOP CLOSURE

FEATURES

CURVED VISOR · STRUCTURED FRONT PANEL · COTTON SWEATBAND

# Hit

• Main Fabric: 100% cotton



WHITE



NAVY



DARK GREY



BLACK



OLIVE



RED



LIGHT GREY

TECH SPECS

ONE SIZE · 280 GSM · SUNDAY BUCKLE

FEATURES

CURVED VISOR · STRUCTURED FRONT PANEL · SELF FABRIC SWEATBAND

# Hotty

• Main Fabric: 100% polyester



BLACK



NAVY

TECH SPECS

28x25 CM · 230 GSM · ELASTIC STRING WITH PLASTIC STOPPER

# Liberty Five

• Main Fabric: 100% cotton



NAVY      RED      BLACK      BOTTLE GREEN

TECH SPECS	ONE SIZE · 260-265 GSM · HOOK & LOOP CLOSURE
FEATURES	CURVED VISOR · STRUCTURED FRONT PANEL · HEAVY BRUSHED

# Liberty Sandwich

• Main Fabric: 100% cotton



LIGHT BLUE-WHITE    WHITE-NAVY    WHITE-WHITE    GREY-WHITE  
 LIGHT GREY-WHITE    GREY-NAVY-GREY    KHAKI-KHAKI    NATURAL-NAVY-NATURAL    BLACK-WHITE    BLACK-GREY-BLACK    BLACK-BLACK    BLACK-RED  
 NAVY-WHITE    NAVY-NAVY    OLIVE-NATURAL    RED-WHITE    RED-NAVY-RED    ROYAL-WHITE    GREEN-WHITE    PURPLE-WHITE

TECH SPECS	ONE SIZE · 275 GSM · SNAP BUCKLE WITH SEWN HOLE
FEATURES	CURVED VISOR · STRUCTURED FRONT PANEL · SANDWICH ON VISOR HEAVY BRUSHED

# Liberty Five Buckle

• Main Fabric: 100% cotton



BLACK

TECH SPECS	ONE SIZE · 260-265 GSM · SNAP BUCKLE WITH SEWN HOLE
FEATURES	CURVED VISOR · STRUCTURED FRONT PANEL · HEAVY BRUSHED



# Liberty Six

• Main Fabric: 100% cotton



---

TECH SPECS ONE SIZE · 260-265 GSM · HOOK & LOOP CLOSURE

---

FEATURES CURVED VISOR · STRUCTURED FRONT PANEL · HEAVY BRUSHED

---

# Moover

• Main Fabric: 100% acrylic



---

TECH SPECS ONE SIZE · 55 G

---

# Liberty Six Buckle

• Main Fabric: 100% cotton



---

TECH SPECS ONE SIZE · 260-265 GSM · FULL METAL BUCKLE WITH METAL HOLE

---

FEATURES CURVED VISOR · STRUCTURED FRONT PANEL · HEAVY BRUSHED

---

# Pilot

• Main Fabric: 100% cotton



---

TECH SPECS ONE SIZE · 320 GSM · FULL METAL BUCKLE WITH SEWN HOLE

---

FEATURES CURVED VISOR · STRUCTURED FRONT PANEL · HEAVY BRUSHED

---

# Pilot Piping Sandwich

• Main Fabric: 100% cotton



TECH SPECS

ONE SIZE · 320 GSM · FULL METAL BUCKLE WITH METAL HOLE

FEATURES

CURVED VISOR · STRUCTURED FRONT PANEL · PIPING ON VISOR  
HEAVY BRUSHED



# Rapper

• Main Fabric: 100% polyester  
• Side & Back: 100% polyester



TECH SPECS

ONE SIZE · 80 GSM · SNAPBACK CLOSURE

FEATURES

CURVED VISOR · PADDED FRONT PANEL



# Rapper Canvas

- Main Fabric: 100% cotton
- Side & Back: 100% polyester



TECH SPECS

ONE SIZE · 260 GSM · SNAPBACK CLOSURE

FEATURES

CURVED VISOR · STRUCTURED FRONT PANEL · GARMENT WASHING  
SHORT VISOR



# Rapper Cotton

- Main Fabric: 100% cotton
- Side & Back: 100% polyester



TECH SPECS

ONE SIZE · 180 GSM · SNAPBACK CLOSURE

FEATURES

CURVED VISOR · STRUCTURED FRONT PANEL



# Rapper Jersey

- Main Fabric: 100% cotton
- Side & Back: 100% polyester



DARK GREY

NAVY

TECH SPECS

ONE SIZE · 220 GSM · SNAPBACK CLOSURE

FEATURES

MID VISOR · STRUCTURED FRONT PANEL · SOFT MESH

# Shot

- Main Fabric: 100% cotton



WHITE

YELLOW

LIGHT GREY

DARK GREY



BLACK

NAVY

RED

ROYAL

TECH SPECS

ONE SIZE · 280 GSM · SUNDAY BUCKLE

FEATURES

CURVED VISOR · STRUCTURED FRONT PANEL · SELF FABRIC SWEATBAND

# Skate

- Main Fabric: 100% acrylic



BLACK

NAVY

DARK GREY

TECH SPECS

ONE SIZE · 69 G

# Snap Back

- Main Fabric: 100% polyester
- Underbill: 100% cotton



BLACK

BLACK-GREY



NAVY

NAVY-RED

TECH SPECS

ONE SIZE · 300 GSM · SNAPBACK CLOSURE

FEATURES

FLAT VISOR · STRUCTURED FRONT PANEL · COTTON SWEATBAND

# Snap Five

- Main Fabric: 100% polyester
- Underbill: 100% cotton



BLACK NAVY RED



TECH SPECS	ONE SIZE · 300 GSM · SNAPBACK CLOSURE
FEATURES	FLAT VISOR · STRUCTURED FRONT PANEL · COTTON SWEATBAND

# Sport Sandwich

- Main Fabric: 100% cotton



WHITE-NAVY WHITE-WHITE GREY-WHITE  
 BLACK-WHITE BLACK-BLACK NAVY-WHITE  
 NAVY-NAVY OLIVE-WHITE GREEN - WHITE BOTTLE GREEN - WHITE



TECH SPECS	ONE SIZE · 180 GSM · SNAP BUCKLE WITH SEWN HOLE
FEATURES	CURVED VISOR · STRUCTURED FRONT PANEL · SANDWICH ON VISOR

# Snow Flap Stopper

- Main Fabric: 100% polyester



BLACK



TECH SPECS	ONE SIZE · 240 GSM · FULLY CLOSED ON BACK WITH STOPPER
FEATURES	CURVED VISOR · UNSTRUCTURED FRONT PANEL SELF FABRIC SWEATBAND



# Start Five

• Main Fabric: 100% cotton



TECH SPECS ONE SIZE · 165 GSM · HOOK & LOOP CLOSURE  
 FEATURES CURVED VISOR · STRUCTURED FRONT PANEL



# Start Five Italia

• Main Fabric: 100% cotton



TECH SPECS ONE SIZE · 165 GSM · HOOK & LOOP CLOSURE  
 FEATURES CURVED VISOR · STRUCTURED FRONT PANEL · HALF PIPING ON VISOR

# Start Five Sandwich

• Main Fabric: 100% cotton



TECH SPECS ONE SIZE · 165 GSM · HOOK & LOOP CLOSURE  
 FEATURES CURVED VISOR · STRUCTURED FRONT PANEL · SANDWICH ON VISOR

# Start Six

• Main Fabric: 100% cotton




---

TECH SPECS ONE SIZE · 165 GSM · HOOK & LOOP CLOSURE

---

FEATURES CURVED VISOR · STRUCTURED FRONT PANEL

# Viral

• Main Fabric: 47% viscose - 23% polyester - 30% nylon




---

TECH SPECS ONE SIZE · 78 G

# Uniform

• Main Fabric: 100% cotton




---

TECH SPECS ONE SIZE · 280 GSM · HOOK & LOOP CLOSURE

---

FEATURES CURVED VISOR · SELF FABRIC SWEATBAND · GARMENT WASHING



# Wind

• Main Fabric: 100% acrylic



TECH SPECS

ONE SIZE · 70 G



# Zoom

• Main Fabric: 65% polyester - 35% cotton



TECH SPECS

ONE SIZE · 180 GSM · HOOK & LOOP CLOSURE

FEATURES

CURVED VISOR · STRUCTURED FRONT PANEL



# The preferred materials portfolio

The **environmental impact benefits** derived from our choice of **preferred materials** are clearly outlined in the 'Sustainable Features' section for each **lower-impact product**, marked with an asterisk (\*). These notations underscore the **specific CO<sub>2</sub>eq impact reductions in percentage and the Carbon Footprint of one unit**, demonstrating the advantages of our **environmentally conscious practices**.

**Life Cycle Assessment (LCA) studies** on our top-selling products<sup>1</sup> reveal that **45.5% to 75% of CO<sub>2</sub> equivalent emissions are attributable to the materials used in our hats**. This insight drives our preference for **recycled materials** to **mitigate environmental impact significantly**.

In cases where recycled options are unavailable, we choose virgin materials with the minimal possible environmental footprint or from regenerative sources.

Discover the **preferred materials** featured in the Atlantis 2026 Collection, designed to collectively **reduce the impact of our choices**:

- Dope-dyed recycled polyester
- Organic cotton
- Polylana®
- Recycled cotton
- Recycled polyester
- Recycled nylon
- Recycled polyethylene
- Recycled merino wool
- Repreve®
- Textile-to-Textile recycled polyester



Our **ongoing product assessment**, crucial for our **transparency**, empowers you with **essential information** to make informed purchasing decisions. This process also helps **optimize our design** choices, continually **minimizing the environmental impact** of our products.

We invite you to **explore the CO<sub>2</sub>eq impact reductions** for each item crafted from our **preferred materials**<sup>2</sup>.

<sup>1</sup> <https://atlantisheadwear.com/en/projects/carbon-footprint/>

<sup>2</sup> Reductions are calculated through a sensitivity analysis contrasting the environmental impact of low-impact materials against conventional ones, using the certified CF Atlantis calculation tool v. 0.7. This tool meticulously tracks the Cradle to gate journey from raw material acquisition to final product delivery at the Atlantis warehouse.



# Embracing Circular Innovation with Textile-to- Textile Recycled Polyester

At the core of our innovation lies a deep commitment to environmental responsibility. We continually push the boundaries with polyester, a fiber known for its durability, wrinkle resistance, and lightweight nature. Mechanically recycled polyester (rPET), derived from PET bottles, has been a significant step toward more responsible fashion. It is **widely available** and makes use of **existing waste**, thus **reducing our environmental footprint**.

However, recognizing that rPET is not the ultimate solution, we introduced a groundbreaking innovation starting with our 2025 collection: **textile-to-textile recycled polyester**. This material begins as textile waste and is **chemically transformed into high-quality, recyclable fibers that mimic virgin polyester** but with a significantly lower environmental impact. Managed under the strictest health and safety standards<sup>1</sup>, this process not only aligns with sustainability principles but also challenges the status quo of responsible materials.

**With each new collection, we take the next step forward.** This year, Teide joins Maui in our virtuous and sustainable product line. It is the **second product made from textile-to-textile recycled polyester**, created by transforming textile waste into high-quality fibers that look and perform like virgin polyester, but with a much lower environmental impact.

<sup>1</sup> <https://textileexchange.org/pfmm/>

# Two materials that move us forward

Wool is a remarkable natural fiber: light, breathable, and capable of providing warmth even in the most extreme conditions. Yet its production can have significant impacts on both animal welfare and the environment.

This is why we chose a different path. Our **new wool fabric is made from 100% recycled pre-consumer wool**, recovered from industrial offcuts before they become waste.

It preserves the essential qualities of wool while avoiding the impacts linked to virgin fiber production.

Available comparative analyses conducted with the CF Atlantis calculation tool show that **1 kg of recycled wool can reduce environmental impact by up to 88% compared to virgin wool<sup>1</sup> fabric.**

A concrete step towards circularity, built on the value of resources already in circulation.

Denim follows a similar direction. Known for its durability and iconic look, denim also carries a traditionally high environmental footprint, particularly due to water consumption and intensive use of chemicals in production. Starting with the 2026 collection, we introduce a **more responsible alternative** on both the fabric and dyeing levels.

Our new material combines **50% recycled cotton** with a more efficient dyeing technology: **DyStar® Indigo Vat 40% Solution<sup>2</sup>**, a pre-reduced liquid formulation that, compared to traditional indigo-powder dyeing, helps:

- eliminate up to 70% of sodium hydrosulfite
- reduce pollutants in wastewater (-70% COD, -40% sulfates, -90% suspended solids)
- ensure chemical responsibility thanks to bluesign® certification

Choosing this fabric means promoting **material reuse**, lowering water and chemical demand, and benefiting from a dyeing process with demonstrably **lower impact**. Overall, this solution delivers an **approximate 20% reduction in carbon footprint** compared to standard denim<sup>3</sup>.

Two new materials, one direction: using what already exists, refining the processes that shape it, and moving design toward a **more responsible future**.

<sup>1</sup> Reduction values are estimated through a comparative analysis between recycled and virgin wool using the certified CF Atlantis calculation tool v.0.7.

<sup>2</sup> Data provided by DyStar®, comparing Indigo Vat 40% Solution with traditional indigo-powder dyeing.

<sup>3</sup> Carbon footprint estimate based on a comparative analysis using the ecoinvent 3.11 database, supported by custom datasets. The study compared conventional denim (100% cotton, traditionally dyed) with a fabric containing 50% post-consumer recycled cotton dyed with a lower-impact technology.





# Not only fabrics

We go further, converting traditional components into recycled alternatives:

RECYCLED VISOR

RECYCLED BUCKRAM

RECYCLED CLOSURES

RECYCLED SWEATBAND

RECYCLED TAPING

RECYCLED LAMINATION

# ReTraze® Recycled Visors: a waste with impact

The story of Atlantis Headwear begins with a question that has never stopped guiding us: “How can we truly reduce the environmental impact of our products?”.

Since 2021, we have chosen to take a closer look by conducting a **Life Cycle Assessment (LCA)** on the most representative products across different categories.

This journey revealed that **fabrics and visors are the main sources of emissions during sourcing and processing.** From there, our decision was clear: **replace virgin plastic in visors with recycled alternatives, without compromising on aesthetics or performance.**

The partnership with **ReTraze®** enables us to actively address the global issue of “Ghost Gear” by turning marine

pollution into an opportunity for conscious and sustainable design. This initiative collaborates with small businesses, fishermen, and NGOs to collect end-of-life fishing nets before they become marine waste. The nets are sorted, cut, washed, melted, shredded, extruded, and transformed into 100% recycled polyethylene panels. **From these panels, among other things, come the visors of our caps that allow us to cut CO<sub>2</sub>eq emissions by -46%\* compared to virgin plastic, without sacrificing the aesthetic and functional qualities that define each of our products.**

\*Reductions are calculated through a sensitivity analysis contrasting the environmental impact of low-impact materials against conventional ones, using the certified CF Atlantis calculation tool v. 0.7.



DISCARDED FISHING  
NETS



FISHING NETS  
SCRAPS



CHIPS  
100% RECYCLED PE

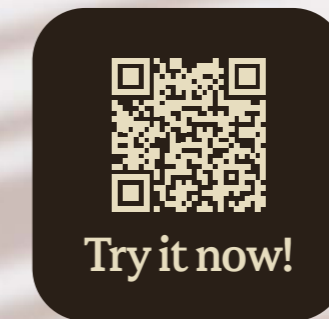


RETRAZE®  
FISHING NETS PANEL

Atlantis+

# Are you an Atlantis reseller?

We have a new service for you and your business



An exclusive platform for retailers.

Get immediate access to a **wide set of online tools** to simply and directly explore our collections, view offers, and connect with our specialists. Digital catalogues, updated visual materials, and inspiring content: **everything you need for easy, successful decision-making.**

# Unlock the potential of your store with an Atlantis Corner

## Engaging Showroom

A well-designed display creates engagement, sparks curiosity, and generates a positive atmosphere in your showroom.

## Memorable Brand

An Atlantis corner helps you stand out from the competition with a unique and memorable visual identity.

## Tailored Experience

The display increases customer satisfaction by offering a variety of styles and colors, making it easy for them to try on products.

## Strategic Accessories

Hats are a complementary accessory. Greater visibility will increase your customers' average spending.





# Index

ACTION	142	FOREVER	149
ACTION-S	34	FOREVER-S	60
ANDY	35	FRASER	61
ARMY-S	36	FREEDOM BASIC	150
BANDANA GOAL	143	FREEDOM BASIC-S	62
BANDANA GOAL-S	37	GATSBY STREET-S	63
BANK FIVE-S	38	GEAR	150
BARU	28	GEAR-S	64
BEAT	143	GEO	65
BEAT-S	39	GHIBLI	66
BILL-S	40	GLOBE TROTTER-S	67
BIRK	41	GORELY	26
BOLT	144	HELPHY-S	68
BOLT-S	30	HIT	151
BOND-S	42	HIT-S	69
BRAD-S	43	HOLLY	70
BREEZY-S	44	HOTTY	151
BRYCE	45	HOTTY-S	71
BUCKET COTTON	144	IRAYA	20
BUCKET COTTON-S	46	ISAR	72
BUCKET POCKET-S	47	JAMES	73
CARGO	145	JOSHUA	74
CASE	145	KAI	75
CHAMPION-S	48	KID FRASER	76
CHAO	15	KID MAYO	77
CORDY-S	49	KID NOMAD-S	78
CREEP-S	50	KID RAPPER-S	79
CRUZ	51	KID RECY FIVE	80
CUMBRE	24	KID SNAP BACK-S	81
DAD HAT	146	KID STAR-S	82
DAD HAT-S	52	KID WIND-S	83
DAD HAT-S FIVE	13	KID WIND-S with POMPOM	29
DAD HAT DESTROYED-S	53	KID YALA	84
DANA	22	LIBERTY FIVE	152
DARWIN	16	LIBERTY FIVE BUCKLE	152
DEMPO	18	LIBERTY SANDWICH	153
DIGG	147	LIBERTY SANDWICH-S	85
DIGG-S	54	LIBERTY SIX	154
DOCKER	147	LIBERTY SIX BUCKLE	154
EKO BEANIE	148	MAPLE	86
EGON	12	MAUI	87
ERIE	55	MOOVER	155
ESTORIL	148	MOOVER-S	88
ESTORIL-S	56	NANTAI	27
FAM-S	57	NELSON	89
FIJI	58	NILA	17
FLASH	149	NOMAD-S	90
FLASH-S	59	OAK	91

PAKA	14	SPORT SANDWICH	163
PICO	92	SPORT SANDWICH-S	125
PIER-S	93	START FIVE	164
PILOT	155	START FIVE ITALIA	165
PILOT-S	94	START FIVE SANDWICH	165
PILOT PIPING SANDWICH	156	START SIX	166
PILOT PIPING SANDWICH-S	95	SWING-S	126
PITCH	96	TANK-S	127
POWELL	97	TECHNO FLAP-S	128
PURE	98	TEIDE	25
RAINY-S	99	TEON	19
RAPPER	157	UNIFORM	166
RAPPER-S	100	UNIFORM-S	129
RAPPER CANVAS	158	VIRAL	167
RAPPER CANVAS-S	101	WIND	168
RAPPER COTTON	159	WIND-S	130
RAPPER COTTON-S	102	WIND-S WITH PATCH	131
RAPPER JERSEY	160	WIND-S WITH POMPOM	132
RAPPER JERSEY-S	31	WIND SCARF-S	133
RAPPER SUEDE-S	103	WINNER-S	134
RAY-S	104	WORKOUT-S	135
RECORD-S	105	YALA	136
RECY BEANIE	106	YUKON	137
RECY FEEL	107	ZION	138
RECY FIVE	108	ZOOM	169
RECY FIVE ITALIA	109		
RECY FIVE PIPING	110		
RECY SIX	111		
RECY THREE	112		
REFLECT-S	113		
RIO	114		
RUBY	21		
SAND	115		
SEVERNY	23		
SHINE	116		
SHORE	117		
SHOT	160		
SHOT-S	118		
SKATE	161		
SKYE	119		
SNAP BACK	161		
SNAP BACK-S	120		
SNAP FIVE	162		
SNAP FIVE-S	121		
SNAP MESH-S	122		
SNOW FLAP STOPPER	162		
SNOW FLAP STOPPER-S	123		
SONIC-S	124		



# Headwear